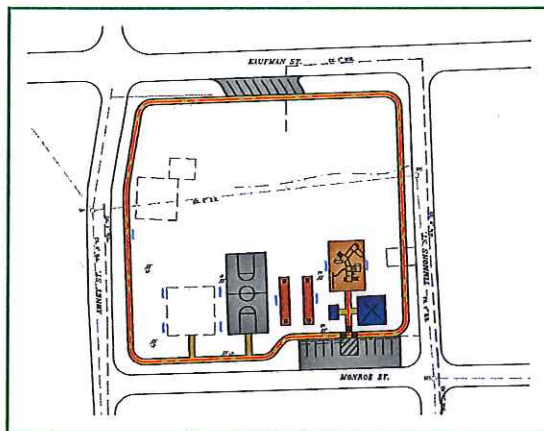


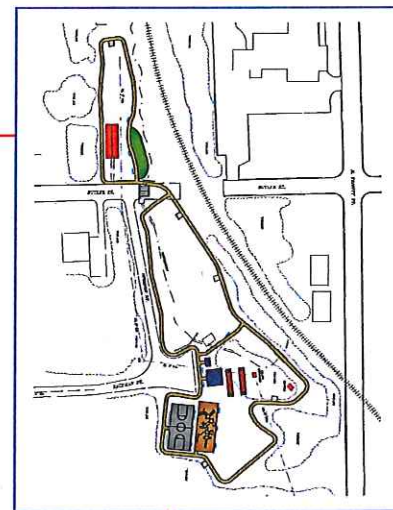
PARK, RECREATION AND OPEN SPACE MASTER PLAN

Prepared for:
CITY OF GILMER, TEXAS
June, 2018

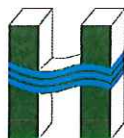
Abney Park



Roosevelt Park



City Park



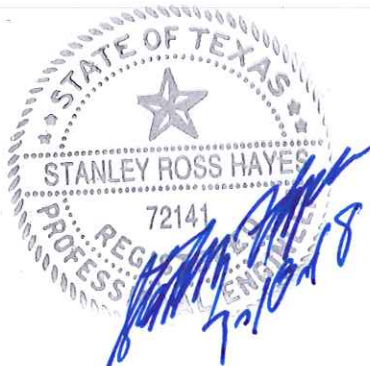
HAYES ENGINEERING, INC.

2126 ALPINE ST. LONGVIEW, TX 75601-3401
V 903.758.2010 F 903.758.2099

TEXAS REGISTERED ENGINEERING FIRM F-1465

CITY OF GILMER, TEXAS
PARK, RECREATION, AND OPEN SPACE MASTER PLAN
FOR 2018-2028

June, 2018



HAYES ENGINEERING, INC.
Texas Registered Engineering Firm F-1465
2126 Alpine St.
Longview, TX 75601
(903) 758-2010

TABLE OF CONTENTS

SECTION I.	INTRODUCTION	
	1.1 Planning Jurisdiction Name.....	1
	1.2 Jurisdiction, Address, Contact, and Telephone Number.	1
	1.3 Consultant's Name, Address, Contact, and Telephone Number.	1
	1.4 Name of Agency Reviewing Master Plan.	1
	1.5 Contributing Groups.	1
	1.6 Purpose.	2
	1.7 Description of the Community.	2
SECTION II.	GOALS AND OBJECTIVES	
	2.1 General.....	4
	2.2 Goals.	4
	2.3 Objectives.	4
SECTION III.	PLAN DEVELOPMENT PROCESS	
	3.1 Plan Inception.	5
	3.2 Plan Development.....	6
	3.3 Public Involvement.....	6
SECTION IV.	AREA AND FACILITY CONCEPTS AND STANDARDS	
	4.1 General.....	7
	4.2 Mini-Park.....	7
	4.3 Neighborhood Park.....	7
	4.4 School Park.....	8
	4.5 Community Park.....	8
	4.6 Sports Complex.	8
	4.7 Natural Resource Area.....	9
SECTION V.	INVENTORY OF AREAS AND FACILITIES	
	5.1 General.....	9
	5.2 City Park & Yamboree Grounds.....	9
	5.3 Roosevelt Neighborhood Park.....	10
	5.4 Quail Run Mini-Park.....	11
	5.5 Lake Gilmer Park and Mitigation Area Trail.....	11
	5.6 Abney Street Neighborhood Park.....	12
SECTION VI.	NEEDS ASSESSMENT AND IDENTIFICATION	
	6.1 Planning Approach.	12
	6.2 Planning Period.....	13
	6.3 Need for New Park, Recreation, and Open Space.	13
	6.4 Athletic Needs.	13
	6.5 Trails and Natural Open Space Needs.	15
SECTION VII.	PLAN IMPLEMENTATION AND PRIORITIZATION OF NEEDS	
	7.1 Facility Priorities.	15
	7.2 Summary of Estimates of Probable Cost.	19
	7.3 Implementation.	19
SECTION VIII.	EXHIBITS	
	Exhibit A Public Participation	
	Exhibit B Location Map	
	Exhibit C Existing Park Pictures	
	Exhibit D 1) TRPA Master Plan Guidelines 2) TRPA Grants Program	
	Exhibit E Proposed Park Improvement Site Plans	

SECTION I. INTRODUCTION

1.1 Planning Jurisdiction Name.

City of Gilmer, Texas

1.2 Jurisdiction, Address, Contact, and Telephone Number.

City of Gilmer
110 Buffalo
P.O. Box 760
Gilmer, TX 75644

The Honorable Tim Marshall, Mayor
(903) 843-2552
(903) 843-3508 (Fax)

1.3 Consultant's Name, Address, Contact, and Telephone Number.

Hayes Engineering, Inc.
2126 Alpine St.
Longview, TX 75601

Stanley R. Hayes, P.E.
(903) 758-2010, Ext. 22
(903) 758-2099 (Fax)

1.4 Name of Agency Reviewing Master Plan.

Texas Parks and Wildlife Department

1.5 Contributing Groups.

The following persons or groups have greatly contributed towards the establishment of a city-wide system of parks, recreation, and open space:

Gilmer City Council Members

Tim Marshall, Mayor
William Hornsby, District 1
Marty Jordan, District 2
Brian Williams, District 3
Brenda Jeffery, District 4
Jarom Tefteller, Member At-Large
Michael Chevalier, Member At-Large

Park Advisory Board

Willie B. Grant
John McWhorter
Ben Dodd
Emma Smith
Lucy Winn
Todd Stansbury
Steve Stewart
Michael Chevalier, Ex-Officio

1.6 Purpose.

The purpose of this Park, Recreation, and Open Space Master Plan is to provide the City of Gilmer the necessary tools to properly establish a system of parks and recreational facilities within their jurisdiction. This 10-year plan will serve as a guide to assist in the development of projects that will meet the intentions, desires, and goals of the community. This plan identifies existing park and open space facilities, evaluates their effectiveness in meeting the needs of the community, and establishes guidelines for future development.

1.7 Description of the Community.

The City of Gilmer, the county seat of Upshur County, is located in northeast Texas at the intersection of U.S. Highway 271 and State Highway 154. Gilmer is approximately one hundred miles east of Dallas, Texas and seventy miles west of Shreveport, Louisiana in the central part of Upshur County. When Upshur County was established in 1846, a provision required that the county seat be located within five miles of the geographic center and that it be called Gilmer, after Thomas W. Gilmer, who died February 28, 1844 in an incident on the USS *Princeton*. United States Secretary of State Abel P. Upshur was killed in the same incident. On December 15, 1846, when the Fifth District Court first met in Upshur County, Judge Oran M. Roberts declared the location of Gilmer.

The City of Gilmer had a population of 4,905 persons according to the 2010 U.S. Census. The 2010 U.S. Census reports Gilmer had 1,378 persons under age 19; 1,415 persons between ages 20 and 44; 1,104 persons between ages 45 and 64; and 1,008 persons over age 65. The ethnic background was composed of 3,674 white, 881 black or African American, and 350 of other races. The median household income was \$41,103. Gilmer has grown approximately 14% since 1960, which is the equivalent growth rate of 0.275% per year. The City historical population as reported by the U.S. Census follows:

<u>Year</u>	<u>Census Population</u>
1960	4,312 persons
1970	4,196 persons
1980	5,167 persons
1990	4,822 persons
2000	4,649 persons
2010	4,905 persons.

The Texas State Water Plan for the Northeast Texas Region currently under development by the Texas Water Development Board lists the following population projection for Gilmer through the year 2070:

<u>Year</u>	<u>Population Projection</u>
2018	5,184 persons
2020	5,695 persons
2030	6,154 persons
2040	6,548 persons
2050	6,953 persons
2060	7,325 persons
2070	7,673 persons.

Gilmer is bisected by U.S Highway 271 in a north-south direction and S.H. 154 in an east-west direction. Gilmer is situated approximately twenty miles north of Interstate 20 and thirty miles south of Interstate 30 in northeast Texas. Gilmer is located in the physiographic region known as the Gulf Coastal Plains. Topography in this region is typically hilly with pine and hardwood vegetation. The planning area is on the western edge of the Piney Woods Belt. The climate is generally mild with an average annual temperature of 64.2°F. The average annual precipitation is 45.7 inches. There are various farming activities located in Upshur County. The principal agricultural products produced include pine and hardwood timber, broilers, eggs, beef and dairy cattle, and crops such as hay, sweet potatoes, peaches, and blueberries.

The City of Gilmer hosts an annual Yamboree Festival and has since 1935. The Yamboree Festival is one of the longest continuous festivals in Texas with attendance in the 30,000 to 40,000 persons range.

SECTION II. GOALS AND OBJECTIVES

2.1 General.

The City of Gilmer Commissioners made a decision to establish a park, recreation and open space system for the community and for it to be managed by an appointed park advisory board. An ad-hoc committee of community leaders and park advisory board members has assembled and has held three public meetings in January, March, and June of 2018. A forty question survey and park facilities ranking were distributed throughout the community and made available at public meetings. The meetings and survey solicited input from the community to set goals and objectives for future parks, recreation, and open spaces for generations to come. The following goals and objectives were established in those three community meetings with significant public involvement including a Parks and Recreation Survey completed by 216 individuals.

2.2 Goals.

The community of Gilmer set their primary goal as creating a system of parks, recreation, and open spaces that would be available to people of all ages and capabilities within the community. Accomplishing this goal would provide the necessary facilities within the City of Gilmer to ensure that all citizens had access to recreational and open space activities.

2.3 Objectives.

- To acquire the necessary land to accommodate the needed facilities while adequate sites are still available.
- To provide easily accessible facilities centrally located to all citizens in the community.

- To provide both improved athletic facilities as well as enhancing existing neighborhood parks.

- To fully utilize all lands acquired to their maximum potential by enhancing existing natural features and providing natural open space areas.

- To empower the public to be actively involved in the planning process as well as take an active role in the development of any facilities to guarantee community pride in the facilities.

- To provide a safe environment for recreational and open space activities.

- To encourage partnering and team building within the community in the development of the parks, recreation, and open space system to achieve full community support and ownership so that any facilities developed will be properly maintained and fully utilized.

SECTION III. PLAN DEVELOPMENT PROCESS

3.1 Plan Inception.

The City of Gilmer began their parks, recreation, and open space planning in Fall 2017. A prime piece of real estate became available on the northeast side of the existing City of Gilmer City Park that was ideally located for expansion and upgrade of a community parks and recreation complex. The family that owned the property had indicated a desire to sell the property at a reasonable price if it would enhance the community park facility and provide opportunities for residents of all ages.

On January 18, 2018, a public meeting was held to determine the level of interest in the community in pursuing a city wide parks, recreation, and open space system. Out of this meeting, the Gilmer Park Advisory Board recommended the Gilmer City Commission vote to begin the planning process. The Park Advisory Board solicited members of the school system, little league associations, local sports coaches, representatives from business and industry, local

community leaders, and local government officials to participate. The City Council and Park Advisory Board solicited the assistance of a local consultant to aid in the planning process. The City Council and Park Advisory Board members and the local consultant are listed in Section I above.

3.2 Plan Development.

Given the limited resources available in a smaller rural city such as Gilmer, the ad hoc committee elected to utilize a combination of planning strategies. The planning strategies utilized were demand-based, standards-based, and resource-based approaches. The local consultant assisted in preparing the planning document.

The planning process began with an assessment of existing facilities available to the public in order to fully understand the needs of the community. The assessment showed that the City of Gilmer had one centrally located sports complex adjacent to the Civic Center and Yamboree Grounds (Gilmer City Park), one neighborhood park (Roosevelt Park), one mini-park (Quail Run Park), and one community park (Lake Gilmer Park and Trail). There is also one private park that is used as a neighborhood park (Abney Street Park). There are also school facilities that are not always available to the public and all of these existing facilities are showing significant signs of aging.

3.3 Public Involvement.

The planning process included a series of public meetings and hearings to discuss the proposed plan and existing available resources, and to establish the parks, recreation, and open space needs of the community. After the initial organizational meeting on November 8, 2018 public meetings were held on January 18, 2018, March 1, 2018 and June 25, 2018. One additional meeting was held on July XX, 2018 for a public hearing to adopt the final Master Plan.

Based on the input from the citizens of Gilmer (see Exhibit A for community involvement activities), the Park Advisory Board recommended the Gilmer City Commission pursue the development of a centrally located community park/sports complex and to enhance the existing neighborhood parks by adding additional activities to meet the needs of the community. It was recommended that these facility improvements be developed in phases and the activities for each phase be identified and prioritized. Estimates of probable cost were then generated and incorporated into the Master Plan.

SECTION IV. AREA AND FACILITY CONCEPTS AND STANDARDS

4.1 General.

The City of Gilmer utilizes six classifications in identifying its park system. The classifications are the mini-park, neighborhood park, school park, community park, sports complex, and natural resource area. Each classification indicates a typical size, service area, location, and facilities.

4.2 Mini-Park.

The mini-park concept is utilized to serve a particular recreational need and is limited in space and service area. The typical size is less than one acre. These type parks are typically located in areas that are already developed and are constructed to serve the immediate limited area. Facilities included in these parks vary with their intended purpose but usually include unique elements, for example, benches, walkways, landscaping, and small shelters or gazebos.

4.3 Neighborhood Park.

The neighborhood park concept is utilized to serve a particular neighborhood and is considered to be the basic building block of the park system to meet the recreational needs of a given residential area. The size of a neighborhood park is normally 1 to 5 acres and services the

immediate neighborhood within a one-quarter to one-half mile radius. The types of recreational opportunities include both passive and active recreation. Facilities usually include walking/jogging paths, playground equipment, picnic areas, game courts, and open spaces.

4.4 School Park.

The school park concept is normally associated with a school campus. The park size varies with the type of school activities for which it is utilized. These type parks are typically located on school property where availability is controlled by the school district.

4.5 Community Park.

The community park concept is utilized to serve multiple neighborhoods. Its size is typically between 5 and 10 acres and the park serves an area within three miles. Community parks generally serve a multitude of recreational needs and include such amenities as walking/jogging paths, playground equipment, picnic areas, game courts, open spaces, restrooms, multipurpose fields, and picnic shelters.

4.6 Sports Complex.

The sports complex concept is utilized to serve the entire community's population by providing a centrally located large complex for organized sports and recreational activities. Its size is typically between 20 and 40 acres. Sports complexes are normally strategically located to accommodate heavy periodic use.

Large facilities such as these make for more efficient ease of maintenance, take advantage of economies of scale, and make it easier to control access. These facilities are typically located to minimize negative impacts to any adjacent neighborhoods. Sports complexes generally include ball fields, soccer/football fields, tennis courts, playground equipment, basketball courts, volleyball courts, group pavilions and picnic areas, and a connecting trail or pathway system.

4.7 Natural Resource Area.

The natural resource area concept is utilized to preserve natural landscape features and resources in an open space environment. Its size varies with the availability of the natural features being preserved. Examples of natural resources to be preserved would be wetlands, bottomland hardwoods, drainage ways, pristine streams, and geologic features.

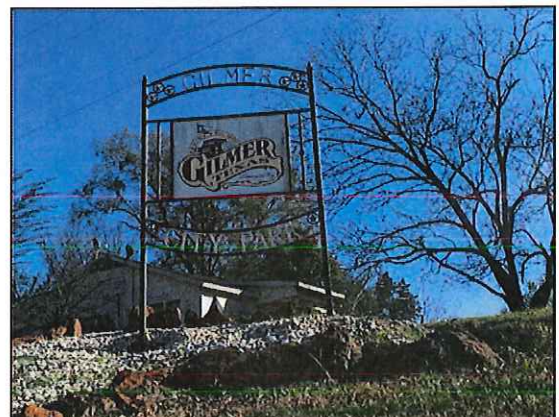
SECTION V. INVENTORY OF AREAS AND FACILITIES

5.1 General.

The City of Gilmer has completed an inventory of existing areas and facilities available for park, recreation, and open spaces. There are only five park facilities available to the citizens of Gilmer. Four of the facilities are owned by the City of Gilmer and one is privately owned. The four city parks are Lake Gilmer Park (a community park), Roosevelt Park (a neighborhood park), Gilmer City Park (a sports complex), and Quail Run Park (a mini-park). A private park historically maintained by the City of Gilmer, Abney Street Park, is also a neighborhood park. The Gilmer Independent School District has four campuses that include two playgrounds, a football field, a soccer field, a baseball field, a softball field, and several open space areas.

5.2 Gilmer City Park and Yamboree Grounds.

The Gilmer City Park and Yamboree Grounds is the largest park facility in Gilmer. The Gilmer City Park is an athletic complex with four baseball fields, three softball fields, six soccer fields, five abandoned tennis courts, and a playground. These facilities are located



adjacent to the Upshur County Civic Center and Yamboree Grounds. The Yamboree Grounds includes an exhibit building, livestock pens and show arena, pavilion, and restrooms. A large asphalt parking lot separates the City of Gilmer Park Sports Complex from the Yamboree Grounds. There are parking spaces for recreational vehicles near the Yaboree Grounds

5.3 Roosevelt Park.

Roosevelt Park is a neighborhood park located near the center of Gilmer. The park is a



linear park which parallels the railroad right of way through the center of town. Roosevelt Park at one time included the City Swimming Pool. The City pool has since been removed. The park now includes a playground, picnic tables, and open space. The park has a natural drainage

way running the length of the park with a drainage ditch lined with native iron ore rock walls.

This facility is utilized to serve the immediate adjacent neighborhoods. Photographs of the facility are included in Exhibit C of this report. A location map is included in Exhibit B.

5.4 Quail Run Mini-Park.

Quail Run Park is a mini-park located on the south side of town which serves the Quail



Run Subdivision. This mini-park includes a slide, teeter-totter, picnic tables, and grill. The park area is mostly open with a few scattered trees. There is a drainage ditch which has partially been filled in with storm sewer with the remainder in an open

grass lined ditch.

5.5 Lake Gilmer Park.

The Lake Gilmer Park and Trail System is the newest park in Gilmer. The park was developed as an amenity to Lake Gilmer, a 900 acre city owned lake. The Gilmer Lake Park

includes a fishing pier, pavilion, playground, swim area beach, picnic tables, grills, and an improved and natural trail system through the Lake Gilmer mitigation area. The mitigation area has a variety of native plant species, wetland areas, upland hardwoods, and an abundance of native wildlife.



5.6 Abney Street Neighborhood Park.

Abney Street Park is a neighborhood park located in the southwest quadrant of the City of Gilmer. The park covers nearly a city block and has been maintained as a city park for years.

Abney Street Park includes a basketball court, two playground areas, picnic tables, and grills.

This facility is centrally located and is frequented by the local neighborhoods. Abney



Street Park is the predominantly used park in Gilmer other than the seasonal use of the Gilmer City Park athletic complex sports fields. Many neighborhood residents congregate regularly at the Abney Street Park to play basketball or to allow smaller children to use the two playground areas available. Photographs of the facility are included in Exhibit C of this report. A location map is included in Exhibit B.

SECTION VI. NEEDS ASSESSMENT AND IDENTIFICATION

6.1 Planning Approach.

The evaluation and identification of the recreational needs of the City of Gilmer included a combination of three planning approaches. The demand-based approach, seeking input from the community in three public meetings, has been the driving force behind the planning process. The standard-based approach was utilized to make a comparison of the demands with National Recreation and Parks Association recommendations. In addition, the resource-based approach was reviewed to ensure any naturally occurring features would be incorporated.

The Needs Assessment is an evaluation of the existing facilities when compared with the proposed demands. The proposed demands are derived, most importantly, from the

recommendations of the public after three public meetings and the work of the ad hoc committee; and from a combination of the planning approaches, comparison with recognized standards, and reviewing the available natural features. The end result is a plan that clearly identifies the community's intent to provide adequate park, recreation, and open space facilities.

6.2 Planning Period.

The planning period selected was 10 years, beginning in 2018 and ending in 2028. As mentioned earlier, the projected population for the City of Gilmer is 5,537 persons in the year 2018, 5,833 persons in the year 2023, and 6,062 persons in the year 2028. These populations were utilized in the standard-based approach.

6.3 Need for New Park, Recreation, and Open Space.

The City of Gilmer currently has limited park, recreation and open space facilities. Citizens often must utilize private facilities that are inadequate for the needs of the community. The youth sports program needs of the City have been growing at an increasing rate. The desire has been expressed through the public meetings held during this planning process to establish a combination sports complex and community park that serves the entire community. This facility will improve and expand the existing city park in its existing location near the Civic Center and adjacent to the Yamboree Grounds. The City of Gilmer has been offered a 12-acre tract of land in a prime location just northeast of the existing City Park Athletic Sports Complex. The property is being offered to the City at a reasonable price for the specific use as a park, recreation, and open space area.

6.4 Athletic Needs.

The City of Gilmer currently has over 500 youths involved in baseball and softball with 48 teams. The soccer association has 17 teams. The community has a growing Hispanic population that has grown from 4.4% in 2000 to 16.4% in 2016.

The number of soccer fields required would be based upon 1 field per 12 teams. The Soccer Association indicates there are currently 17 teams and there are projected to be 20 teams in the year 2028. Therefore, the number of fields required now would be two and for the 10-year planning period would remain at two.

The youth baseball and softball program consists of 31 baseball teams and 17 softball teams. The existing program is played on the City Park fields. There are five baseball and two softball fields at this park and most of the facilities are over 50 years old and need upgrading.

The youth baseball program is estimated to grow to 34 teams by 2028. The number of required fields for today's teams is two. The number of fields projected to be needed by 2028 will be three. The youth softball program is estimated to grow to 19 teams by 2028. The number of required fields for today's teams is two. The number of fields projected to be needed by 2028 will remain at two.

The youth football program consists of 4 teams. These teams currently play on the Gilmer I.S.D. football field. The youth football program is estimated to grow to 5 teams by 2028. The number of required fields for today's teams is one. The number of fields projected to be needed by 2028 would remain at one.

The adult softball program does not currently exist although there are members of the community that participate in leagues in other cities. Teams do not have facilities in Gilmer to utilize. The adult softball program is projected to grow to 6 teams by 2028. The number of recommended fields for today's teams is one. The number of fields projected to be needed by 2028 will remain at one.

The City of Gilmer has no existing functional tennis courts available to the public. The Gilmer I.S.D. has two tennis courts which are made available to the public when school is not in session. The National Recreation and Park Association recommends one tennis court for each

2,000 persons in population. The existing need for tennis courts would be three and the projection for 2028 would remain at three.

The City of Gilmer has no existing basketball courts available to the public. There is one one-half court at Abney Street Park, a private park. The National Recreation and Park Association recommends one basketball court for each 2,000 persons in population. The existing need for basketball courts would be three and the projection for 2028 would remain at three.

6.5 Trails and Natural Open Space Needs.

The City of Gilmer currently has no designated trails within the city limits. The only trail/walking path within the County is located at the Lake Gilmer Park. The City of Gilmer also has no natural open space nature areas, nor areas for passive recreational activities except at Lake Gilmer.

The proposed park should include a 1-mile walking/jogging path that will pass through designated natural areas and open spaces. An existing naturally occurring wetlands area should be set aside for passive activities. In an effort to preserve the cultural heritage of the region, existing American Beauty Berry shrubbery should be protected and featured in these two areas. The American Beauty Berry was once utilized by Native Americans as a dye for clothing.

SECTION VII. PLAN IMPLEMENTATION AND PRIORITIZATION OF NEEDS

7.1 Facility Priorities.

The City of Gilmer has selected the following priorities for satisfying the Park, Recreation, and Open Space needs of the community. This list was derived after careful consideration of the public comments received during the public meetings, rankings from the survey, and based upon the recommendations of the Park Advisory Board.

Prioritization of Facilities

<u>Ranking</u>	<u>Facility Description</u>
1	Baseball Fields
2	Softball Fields
3	Picnic Facilities and Shelters
4	Spraygrounds
5	Playgrounds
6	Multi-Use Trails
7	Soccer/Football Fields
8	Basketball Courts
9	Natural Nature Areas
10	Indoor Recreation Centers
11	Volley Ball Courts
12	Tennis Courts
13	Frisbee Golf Course.

Based on the needs assessment and recommendations of the ad hoc committee and the availability of prime real estate through acquisition the City of Gilmer should pursue a phased approach to meet the existing and proposed needs of the community for park, recreation, and open space facilities. The following estimates of probable cost have been prepared for use as a guide in planning for funding mechanisms to accomplish the projects identified in this plan. More detailed estimates should be prepared prior to construction. Site plans for the proposed improvements are included in Exhibit E.

Phase I: 2018-2023

1. Acquire the 12 acres of land adjacent to the northeast end of the Gilmer City Park.
2. Acquire two parcels for the Abney Street Park.
3. Develop Phase I of Gilmer City Park, a combination Sports Complex/Community Park:

Sitework	\$150,000
Park Entrance Drive and Associated Parking	\$450,000
Four Baseball Fields (4 x \$160,000)	\$640,000
Field Lighting (4 x \$75,000)	\$300,000
Baseball Batting Cage	\$25,000
Baseball Concession/Restroom	\$180,000
Six Soccer/Football Fields	\$120,000
Soccer Concession/Restroom	\$180,000
Walking/Jogging Trail w/Exercise Stations	\$300,000
Playground Area	\$50,000
Volleyball Sand Court	\$4,000
Water/Sewer/Irrigation	\$100,000
Picnic Facilities	\$6,000
Storm Sewer Drainage Improvements	\$60,000
Horseshoe Pits	\$1,000
Nature Area	\$5,000
Landscaping	\$30,000
Project Signage	<u>\$50,000</u>
City Park Phase I Construction Sub Total	\$2,651,000
Basic Engineering	\$180,000
Surveying	\$10,000
Geotechnical	\$5,000
Materials Testing	\$15,000
Legal and Administrative	<u>\$15,000</u>
City Park Phase I Total	<u>\$2,876,000</u>

4. Develop Roosevelt Park Improvements:

Horseshoe Pits	\$1,000
Walking/Jogging Trail w/Exercise Stations	\$100,000
Playground Area	\$60,000
Pavilion	\$65,000
Restrooms	\$100,000
Basketball Court	\$35,000
Butterfly Garden	<u>\$1,000</u>
Roosevelt Park Construction Sub Total	\$362,000
Basic Engineering	\$32,500
Surveying	\$3,500
Geotechnical	\$3,000
Materials Testing	\$5,000
Legal and Administrative	<u>\$5,000</u>
Roosevelt Park Total	<u>\$411,000</u>

Phase II: 2023-2028

1. Develop Phase II of Gilmer City Park:

Sitework	\$200,000
Four Softball Fields (4 x \$160,000)	\$640,000
Two Baseball Fields (2 x \$175,000)	\$350,000
Baseball Batting Cage	\$25,000
Softball Batting Cage	\$25,000
Softball Concession/Restroom	\$180,000
Splash Pad Spray Ground w/Shade	\$125,000
Splash Pad Pavilions	\$100,000
Two Tennis Courts	\$60,000
Nine Hole Frisbee Golf	\$9,000
Water/Sewer/Irrigation	\$100,000
Picnic Pavilion	\$65,000
Concrete Sidewalk Flatwork	\$150,000
Curb and Gutter and Pave Parking Areas	\$1,800,000
Landscaping	\$30,000
Project Signage	<u>\$25,000</u>
City Park Phase II Construction Sub Total	\$3,884,000
Basic Engineering	\$252,000
Surveying	\$10,000
Geotechnical	\$5,000
Materials Testing	\$15,000
Legal and Administrative	<u>\$5,000</u>
City Park Phase II Total	<u>\$4,171,000</u>

2. Develop Abney Street Park Improvements:

Horseshoe Pits	\$1,000
Walking/Jogging Trail w/Exercise Stations	\$50,000
Playground Area	\$60,000
Pavilion	\$65,000
Restrooms	\$100,000
Basketball Court	\$35,000
Parking Improvements	\$20,000
Butterfly Garden	<u>\$1,000</u>
Abney Street Construction Sub Total	\$332,000
Basic Engineering	\$30,000
Surveying	\$3,500
Geotechnical	\$3,000
Materials Testing	\$5,000
Legal and Administrative	<u>\$5,000</u>
Abney Street Park Total	<u>\$378,500</u>

7.2 Summary of Estimates of Probable Costs.

Phase I: 2018-2023

1. 12 acres for Gilmer City Park
2. 2 parcels for Abney Street Park
3. Phase I of Gilmer City Park Improvements \$2,876,000
4. Roosevelt Park Improvements \$411,000

Phase II: 2023-2028

1. Phase II of Gilmer City Park Improvements \$4,171,000
2. Abney Street Park Improvements \$378,500

Total Estimate of Probable Cost **\$7,836,500**

7.3 Implementation.

The following sources of funding are available to the City of Gilmer for implementing the recommendations of this Master Plan.

Texas Recreation & Parks Account Program – a 50% matching grant program for park development administered by Texas Parks and Wildlife. See Exhibit D for Texas Recreation & Parks Account Small Grants Program.

Texas Recreational Trails Fund – provides 80% matching funds for trail projects through a National Recreational Trail Grant administered by Texas Parks and Wildlife.

Private or Corporate Donations – many park facility improvements are accomplished through sponsorships from private individuals or corporations within the community.

General Funds – utilizes standard annual budgeting process administered by the City.

Bonds -

1) General Obligation Bonds – voter-authorized bonds issued for a specific tax for a specific purpose.

2) Certificates of Obligation – City Council authorized bonds issued for a specific tax for a specific purpose.

User Fees – park users pay fees for use of each facility.

Sales Tax Revenues – special sales tax for developing and maintaining public recreational facilities.

The City of Gilmer should pursue financial assistance in the form of a 50% matching grant through the Texas Recreation & Parks Account Program, utilizing private and corporate donations and general funds as their match.

SECTION VIII. EXHIBITS

- | | |
|-----------|--|
| Exhibit A | Public Participation |
| Exhibit B | Location Map |
| Exhibit C | Existing Park Pictures |
| Exhibit D | 1) TRPA Master Plan Guidelines
2) TRPA Grants Program |
| Exhibit E | Proposed Park Improvement Site Plans |

EXHIBIT A
Public Participation

**City of Gilmer
Parks and Recreation
Survey Results Summary March 1, 2018**

Survey Question		%			%
1 Do you visit the Gilmer neighborhood city parks (Abney Street, Roosevelt, Quail Run)?	yes	35		no	65
2 Do you attend park activities at the Gilmer City Park (Athletic Complex)?	yes	87		no	13
3 Do you visit the Gilmer Lake Park or trail system?	yes	68		no	32
4 Are you involved in any volunteer work involving our city parks and recreational facilities?	yes	48		no	52
5 Are you or your family involved in activities or sporting events at our recreational facilities?	yes	80		no	20
6 Do you have children that participate in organize sporting events at our city parks?	yes	73		no	27
7 Do you feel our citizens are well informed about our parks and recreational facilities?	yes	14		no	86
8 Are you satisfied with the current conditions of our city parks?	yes	8		no	92
9 Do you feel safe when visiting our city parks?	yes	48		no	52
10 Do you feel we have adequate parking for our neighborhood parks?	yes	21		no	79
11 Do you feel we have adequate parking for our Gilmer City Park?	yes	45		no	55
12 Do you feel our Gilmer City Park have enough seating for spectators?	yes	16		no	84
13 Are you satisfied with current conditions of restroom facilities at the Gilmer City Park?	yes	11		no	89
14 Are you satisfied with current conditions of restroom facilities at our neighborhood parks?	yes	6		no	94
15 Are you satisfied with the our current soccer fields?	yes	50		no	50
16 Do you feel that we have a sufficient number of soccer fields?	yes	51		no	49
17 Are you satisfied with our current baseball fields?	yes	17		no	83
18 Do you feel that we have a sufficient number of baseball fields?	yes	23		no	77
19 Are you satisfied with our current softball fields?	yes	15		no	85
20 Do you feel that we have a sufficient number of softball fields?	yes	22		no	78
21 Are you satisfied with our current basketball facilities?	yes	44		no	56
22 Do you feel that we have a sufficient number of basketball courts?	yes	44		no	56
23 Are you satisfied with our current tennis facilities?	yes	11		no	89
24 Do you feel we have a sufficient number of tennis courts?	yes	13		no	87
25 Are you satisfied with our current trail facilities?	yes	24		no	76
26 Do you feel we have a sufficient length of trails?	yes	26		no	74
27 Do you feel playground equipment needs updates/improvement at neighborhood parks?	yes	57		no	43
28 Do you feel playground equipment needs updates/improvements at the Gilmer City Park?	yes	87		no	13
29 Do you feel our parks are in need of upgrades to allow for events such as tournaments?	yes	91		no	9
30 Do you feel our existing parks should be include water facilities such as spraygrounds ?	yes	82		no	18
31 Do you feel our parks and recreational facilities are well maintained?	yes	25		no	75
32 Do you feel the city has a need for a position dedicated to park maintenance and upkeep?	yes	87		no	13
33 Are you willing to support a tax increase to update our current facilities?	yes	83		no	17
34 Are you willing to support a tax increase to fund additional parks?	yes	80		no	20
35 Are you willing to support a tax increase to fund additional staff for park maintenance?	yes	81		no	19
36 Would you volunteer at our parks and recreational facilities to provide labor for a project?	yes	79		no	21
37 Would you volunteer at our parks and recreational facilities to perform maintenance?	yes	57		no	43
38 Do you live in the city limits of Gilmer?	yes	51		no	49
39 Do you own property within the city limits of Gilmer?	yes	53		no	47
Ranking results for additional parks and recreational facilities.		Score			
1 Baseball Fields		507			
2 Softball Fields		389			
3 Picnic Shelters/Pavillions		338			
4 Sprayground		257			
5 Playgrounds		186			
6 Multi-use Paved Trails		170			
7 Soccer Fields		115			
8 Basketball Courts		87			
9 Nature Areas		81			
10 Indoor Recreation Centers		58			
11 Sand Volley Ball Court		37			
12 Tennis Courts		34			
13 Frisbee Golf Course		22			

Survey Comments

From: Grant Woodson <grant.woodson@gmail.com>
Sent: Wednesday, February 07, 2018 8:48 PM
To: kathyd@etex.net
Subject: Additional comments for Parks and Rec Survey

Hi Kathy,

I was at the "Town Hall" meeting in January for the Park and Rec board. I asked if additional comments could be made to the survey and was told that I could email them to you. The following are my comments regarding the Parks and Rec Survey.

Thanks!

To whom it may concern:

My name is Grant Woodson, and I attended the "Town Hall" meeting for the Parks and Recreation Board on January 18, 2018 at the Civic Center. I turned in my survey that evening, but when it was announced that additional comments could be added on the back of the surveys, I had already turned in mine.

I'm, essentially, a life-long resident of Gilmer. I also have a pretty unique perspective to what was discussed at the meeting in that not only have I resided within the city limits of Gilmer for virtually my entire life, I attended school for 10 years at Harmony where I still have many friends, and I currently teach at Big Sandy. I also have sons who play both baseball and soccer within the GBA and UCYSA organizations respectively. So, I have and know people in quite a few communities that will benefit from new athletic facilities.

Let me first say that I am very much in favor of new athletic facilities for our youth. My sons are playing on the same fields I played on when I was their same age. I do think, however, that there will be quite a bit of opposition. In fact, if what's being proposed goes to the tax payers of Gilmer, it will not pass.

One of the first reasons as to why this should not go to a vote from the citizens of Gilmer is that this is being proposed at quite possibly the worst time. The tax payers are already being asked to approve a \$35 million bond. It's also an election year. Most candidates in today's climate aren't going to want to openly support high taxes.

I do have a few questions pertaining to this proposal before I discuss some more specific items. Has a study been done on how many participants reside within the city limits versus how many live in the county? Also, has a study been done on the past participation in youth sports in an effort to gauge future interest? Have levels of participation stayed the same, increased, or decreased over the past five to ten years?

Finally, I think the following issues within Gilmer Baseball Association will ultimately be the downfall of the proposal in regards to it being publicly funded.

There is, in my opinion, very little support for GBA. I think as long as the current board is in charge this the support will not improve. There is absolutely no transparency to the board. For example, I think you'd find that most parents don't know their participation fees do NOT pay for their uniforms. Parents pay \$95 per child to participate. Coaches, however, are forced to find a \$350 sponsor to fund their uniforms or find some other way to pay for their teams uniforms.

Wendy Alexander stated at the town hall meeting that despite everything, the fields are well maintained and we've been blessed with churches and individuals doing things for our stands. I have to vehemently disagree with her assertion that our fields are well-maintained. In fact, I'm not afraid to say that her statement is a blatant lie. Last season our fields were never mowed and trash was rarely, if ever, picked up. The tee-ball field was littered with fire ant hills. In fact, during one game my son ran to second while the opposing team's pitcher was trying to run him down. My son slid into the base safe. The pitcher, who is the younger brother of one of my students, tripped over my son, and rolled into the outfield where he landed in a huge fire ant bed. He was almost immediately covered in fire ants and began screaming. I was coaching third base and ran to him while his coach ran out from the dugout. We picked him up and started shaking the fire ants off of him. That doesn't sound like a "well-maintained field" to me. A well-maintained field is a field that gets seeded and has had pest control done on it. The fields haven't been seeded in two years. The last time they were seeded was a week before opening day which didn't allow the seed time to root and it rained the day after seeding happened and the seeds were washed away. Troy Murray brought a truck-full of fill dirt to the tee-ball field last year because the league refused to do anything about an erosion problem. I was glad to hear that if and when the fields get built that the city will take over the maintenance of the fields.

Now back to transparency, in tee-ball alone, GBA had \$8,740 in participation fees. That number doesn't include fees from the children who play on the team from Big Sandy. I'll admit I don't know if that's the exact number, but I came to that number knowing we had 92 children eligible for the tee-ball draft and fees were \$95 last year. That's just the amount one league brought in last year. Tee-ball had the largest group of players, but the other three leagues had roughly half the same amount of participation that tee-ball did. So, assuming that the other three leagues (U8, U10, and U12) had roughly half the participation that tee-ball did, GBA should have brought in at least \$21,850 in participation fees. I would be willing to bet that the actual number of monies from participation fees is upwards of \$25,000 or more. Having said that, no one knows what the money is going towards. Financial records aren't published on the poorly updated website. I heard Wendy tell someone that part of the reason fees are so high is because parents won't volunteer to work the concession stand. That's not true either. My wife volunteered to work in the concession stand but has never been called to ask if she would work. Essentially, we're going to build a new complex for a league that isn't being run very well in regards to its finances.

The current board is extremely secretive in how and when they meet. They do not post on their website or on their Facebook page as to when and where they hold their meetings. Again, this does nothing to improve trust with the board nor does it make the board look more transparent. All of this does nothing to improve the trust in the community that new fields are warranted.

For far too long people have been afraid to speak out against the way the league has been run. People were afraid that speaking out would negatively affect their child. However, with the founding of the Pinewoods Little League, people are no longer afraid. In addition to travel ball teams, we now have an option of having our children play within the Little League organization instead of the Dixie Youth organization. People are also leaving our league almost as quickly as they sign-up. The teams from Big Sandy have opted to play in a league with Gladewater, Winona, and Hawkins this year in part because of distance, but mostly because of how the league is being run.

In closing, I am all for the building of new fields, but I do not think asking the taxpayers to foot the bill is the way to go. I think soliciting donations from businesses and individuals in exchange for some sort of acknowledgement or advertising is the direction the City of Gilmer should go. I would also like to become involved with the Parks and Recreation Board so that I can be a servant to the community and our children.

Thank you for your time.

Sincerely,

Grant Woodson

3 softball fields
5 baseball fields
2 large soccer fields
1 large area

according to
Todd Stanbury -
what we have at present

Thursday, January 18th, 5:30 p.m., Gilmer Civic Center

The public is encouraged to attend - Please bring this completed form to the meeting
City of Gilmer

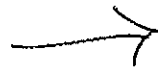
Parks and Recreation Survey

We appreciate your participation in this important survey. Please circle your answer to the right.		yes	no
Do you visit the Gilmer neighborhood city parks (Abney Street, Roosevelt, Quail Run)?	did not know	<input type="radio"/>	<input type="radio"/>
Do you attend park activities at the Gilmer City Park (Athletic Complex)?		<input type="radio"/>	<input type="radio"/>
Do you visit the Gilmer Lake Park or trail system?		<input type="radio"/>	<input type="radio"/>
Are you involved in any volunteer work involving our city parks and recreational facilities?		<input type="radio"/>	<input type="radio"/>
Are you or your family involved in activities or sporting events at our recreational facilities?		<input type="radio"/>	<input type="radio"/>
Do you have children that participate in organize sporting events at our city parks?		<input type="radio"/>	<input type="radio"/>
Do you feel our citizens are well informed about our parks and recreational facilities?		<input type="radio"/>	<input type="radio"/>
Are you satisfied with the current conditions of our city parks?		<input type="radio"/>	<input type="radio"/>
Do you feel safe when visiting our city parks?	NONE IS EVER THERE	<input type="radio"/>	<input type="radio"/>
Do you feel we have adequate parking for our neighborhood parks?	except yamboree	<input type="radio"/>	<input type="radio"/>
Do you feel we have adequate parking for our Gilmer City Park?		<input type="radio"/>	<input type="radio"/>
Do you feel our Gilmer City Park has enough seating for spectators?		<input type="radio"/>	<input type="radio"/>
Are you satisfied with current conditions of restroom facilities at the Gilmer City Park?		<input type="radio"/>	<input type="radio"/>
Are you satisfied with current conditions of restroom facilities at our neighborhood parks?		<input type="radio"/>	<input type="radio"/>
Are you satisfied with our current soccer fields?		<input type="radio"/>	<input type="radio"/>
Do you feel we have a sufficient number of soccer fields?		<input type="radio"/>	<input type="radio"/>
Are you satisfied with our current baseball fields?		<input type="radio"/>	<input type="radio"/>
Do you feel we have a sufficient number of baseball fields?		<input type="radio"/>	<input type="radio"/>
Are you satisfied with our current softball fields?		<input type="radio"/>	<input type="radio"/>
Do you feel we have a sufficient number of softball fields?		<input type="radio"/>	<input type="radio"/>
Are you satisfied with our current basketball facilities?		<input type="radio"/>	<input type="radio"/>
Do you feel we have a sufficient number of basketball courts?		<input type="radio"/>	<input type="radio"/>
Are you satisfied with our current tennis facilities?	COVERED WITH GRASS	<input type="radio"/>	<input type="radio"/>
Do you feel we have a sufficient number of tennis courts?		<input type="radio"/>	<input type="radio"/>
Are you satisfied with our current trail facilities?	NEVER SEE ANYONE USE THEM	<input type="radio"/>	<input type="radio"/>
Do you feel we have a sufficient length of trails?		<input type="radio"/>	<input type="radio"/>
Do you feel playground equipment needs updates/improvement at neighborhood parks?		<input type="radio"/>	<input type="radio"/>
Do you feel playground equipment needs updates/improvements at the Gilmer City Park?		<input type="radio"/>	<input type="radio"/>
Do you feel our parks are in need of upgrades to allow for events such as tournaments?		<input type="radio"/>	<input type="radio"/>
Do you feel our existing parks should include water facilities such as spraygrounds?		<input type="radio"/>	<input type="radio"/>
Do you feel our parks and recreational facilities are well maintained?	NO, NO, NO!	<input type="radio"/>	<input type="radio"/>
Do you feel the city has a need for a position dedicated to park maintenance and upkeep?	YES!	<input type="radio"/>	<input type="radio"/>
Are you willing to support a tax increase to update our current facilities?		<input type="radio"/>	<input type="radio"/>
Are you willing to support a tax increase to fund additional parks?		<input type="radio"/>	<input type="radio"/>
Are you willing to support a tax increase to fund additional staff for park maintenance?		<input type="radio"/>	<input type="radio"/>
Would you volunteer at our parks and recreational facilities to provide labor for a project?		<input type="radio"/>	<input type="radio"/>
Would you volunteer at our parks and recreational facilities to perform maintenance?		<input type="radio"/>	<input type="radio"/>
Do you live in the city limits of Gilmer?		<input type="radio"/>	<input type="radio"/>
Do you own property within the city limits of Gilmer?		<input type="radio"/>	<input type="radio"/>
What additional parks and recreational facilities would you like to have in Gilmer?			
Please rank the top five areas you would like to see improved by scoring 1-5 with 5 being what is most important. Only choose five areas of improvement.			
Frisbee Golf Course			
Playgrounds			
Picnic Shelters/Pavillions			
Multi-use Paved Trails			
Indoor Recreation Centers			
Nature Areas			
Sprayground			
Softball Fields		4	
Baseball Fields		5	
Soccer Fields		3	
Sand Volley Ball Court		2	
Basketball Courts		1	
Tennis Courts			

Have in the past.
A Disgrace even then.

NO

USE PROBATIONERS



There is NO Maintenance Period, The City Parks are rarely used, The old Scout Hut which some people made such an effort to preserve has been totally vandalized.^{Also} One of the old Stone Columns has been knocked over. Unless you know where the Yamboree Park is, you will miss it because you can't see the sign until you pass it, because it sets so far back from the highway.

Put the probationers to work their service hours in park maintenance. Form a men's volunteer garden club. Keep 18 wheelers out of the parking lot.

We don't need a splash pad, etc. because they will all go to ruin just like the rest of the parks because they are not routinely kept up.

Also, since it's the Yamboree Park, the Yamboree Association should bear some responsibility of expenses, repairs and maintenance.

Visit other towns. See the difference. Put the Park Advisory Board to work on Cleaning up the Parks, Not dreaming about big ideas that won't be taken care of.

Thursday, January 18th, 5:30 p.m., Gilmer Civic Center

The public is encouraged to attend - Please bring this completed form to the meeting
City of Gilmer

Parks and Recreation Survey

this park is secluded, doesn't appear to be safe

We appreciate your participation in this important survey. Please circle your answer to the right.		
Do you visit the Gilmer neighborhood city parks (Abney Street, Roosevelt, Quail Run)?	yes	<input type="radio"/> no
Do you attend park activities at the Gilmer City Park (Athletic Complex)?	yes	<input type="radio"/> no
Do you visit the Gilmer Lake Park or trail system?	<i>(not as often)</i> yes	<input type="radio"/> no
Are you involved in any volunteer work involving our city parks and recreational facilities?	yes	<input type="radio"/> no
Are you or your family involved in activities or sporting events at our recreational facilities?	yes	<input type="radio"/> no
Do you have children that participate in organize sporting events at our city parks?	<input checked="" type="radio"/> yes	<input type="radio"/> no
Do you feel our citizens are well informed about our parks and recreational facilities?	yes	<input type="radio"/> no
Are you satisfied with the current conditions of our city parks?	yes	<input type="radio"/> no
Do you feel safe when visiting our city parks?	<i>sometimes</i> yes	<input type="radio"/> no
Do you feel we have adequate parking for our neighborhood parks?	yes	<input type="radio"/> no
Do you feel we have adequate parking for our Gilmer City Park?	<i>in certain areas</i> yes	<input type="radio"/> no
Do you feel our Gilmer City Park has enough seating for spectators?	yes	<input type="radio"/> no
Are you satisfied with current conditions of restroom facilities at the Gilmer City Park?	yes	<input type="radio"/> no
Are you satisfied with current conditions of restroom facilities at our neighborhood parks?	yes	<input type="radio"/> no
Are you satisfied with our current soccer fields?	<input checked="" type="radio"/> yes	<input type="radio"/> no
Do you feel we have a sufficient number of soccer fields?	yes	<input type="radio"/> no
Are you satisfied with our current baseball fields?	<input checked="" type="radio"/> yes	<input type="radio"/> no
Do you feel we have a sufficient number of baseball fields?	<input checked="" type="radio"/> yes	<input type="radio"/> no
Are you satisfied with our current softball fields?	<input checked="" type="radio"/> yes	<input type="radio"/> no
Do you feel we have a sufficient number of softball fields?	<input checked="" type="radio"/> yes	<input type="radio"/> no
Are you satisfied with our current basketball facilities?	yes	<input type="radio"/> no
Do you feel we have a sufficient number of basketball courts?	yes	<input type="radio"/> no
Are you satisfied with our current tennis facilities?	yes	<input type="radio"/> no
Do you feel we have a sufficient number of tennis courts?	yes	<input type="radio"/> no
Are you satisfied with our current trail facilities?	<i>we only have 1</i> yes	<input type="radio"/> no
Do you feel we have a sufficient length of trails?	<i>we have trails?</i> yes	<input type="radio"/> no
Do you feel playground equipment needs updates/improvement at neighborhood parks?	yes	<input type="radio"/> no
Do you feel playground equipment needs updates/improvements at the Gilmer City Park?	yes	<input type="radio"/> no
Do you feel our parks are in need of upgrades to allow for events such as tournaments?	<input checked="" type="radio"/> yes	<input type="radio"/> no
Do you feel our existing parks should include water facilities such as spraygrounds?	<input checked="" type="radio"/> yes	<input type="radio"/> no
Do you feel our parks and recreational facilities are well maintained?	yes	<input type="radio"/> no
Do you feel the city has a need for a position dedicated to park maintenance and upkeep?	<input checked="" type="radio"/> yes	<input type="radio"/> no
Are you willing to support a tax increase to update our current facilities?	yes	<input type="radio"/> no
Are you willing to support a tax increase to fund additional parks?	yes	<input type="radio"/> no
Are you willing to support a tax increase to fund additional staff for park maintenance?	yes	<input type="radio"/> no
Would you volunteer at our parks and recreational facilities to provide labor for a project?	yes	<input type="radio"/> no
Would you volunteer at our parks and recreational facilities to perform maintenance?	yes	<input type="radio"/> no
Do you live in the city limits of Gilmer?	<input checked="" type="radio"/> yes	<input type="radio"/> no
Do you own property within the city limits of Gilmer?	<input checked="" type="radio"/> yes	<input type="radio"/> no
What additional parks and recreational facilities would you like to have in Gilmer?		
Please rank the top five areas you would like to see improved by scoring 1-5 with 5 being what is most important. Only choose five areas of improvement.		
Frisbee Golf Course		
Playgrounds	1	
Picnic Shelters/Pavillions		
Multi-use Paved Trails	2	
Indoor Recreation Centers	4	
Nature Areas	5	
Sprayground		
Softball Fields		
Baseball Fields		
Soccer Fields		
Sand Volley Ball Court	3	
Basketball Courts		
Tennis Courts		

(need to start)

OK

cold + dark

that I know of

@some of the parks not all

sometimes

Thursday, January 18th, 5:30 p.m., Gilmer Civic Center

The public is encouraged to attend - Please bring this completed form to the meeting
City of Gilmer

Parks and Recreation Survey

We appreciate your participation in this important survey. Please circle your answer to the right.		
Do you visit the Gilmer neighborhood city parks (Abney Street, Roosevelt, Quail Run)?	yes	<input checked="" type="radio"/> no
Do you attend park activities at the Gilmer City Park (Athletic Complex)?	yes	<input checked="" type="radio"/> no
Do you visit the Gilmer Lake Park or trail system?	<input checked="" type="radio"/> yes	no
Are you involved in any volunteer work involving our city parks and recreational facilities?	yes	<input checked="" type="radio"/> no
Are you or your family involved in activities or sporting events at our recreational facilities?	yes	<input checked="" type="radio"/> no
Do you have children that participate in organized sporting events at our city parks?	yes	<input checked="" type="radio"/> no
Do you feel our citizens are well informed about our parks and recreational facilities?	yes	<input checked="" type="radio"/> no
Are you satisfied with the current conditions of our city parks?	yes	<input checked="" type="radio"/> no
Do you feel safe when visiting our city parks?	<input checked="" type="radio"/> yes	no
Do you feel we have adequate parking for our neighborhood parks?	<input checked="" type="radio"/> yes	no
Do you feel we have adequate parking for our Gilmer City Park?	yes	<input checked="" type="radio"/> no
Do you feel our Gilmer City Park has enough seating for spectators?	yes	<input checked="" type="radio"/> no
Are you satisfied with current conditions of restroom facilities at the Gilmer City Park?	yes	<input checked="" type="radio"/> no
Are you satisfied with current conditions of restroom facilities at our neighborhood parks?	yes	<input checked="" type="radio"/> no
Are you satisfied with our current soccer fields?	yes	<input checked="" type="radio"/> no
Do you feel we have a sufficient number of soccer fields?	yes	<input checked="" type="radio"/> no
Are you satisfied with our current baseball fields?	<input checked="" type="radio"/> yes	no
Do you feel we have a sufficient number of baseball fields?	<input checked="" type="radio"/> yes	no
Are you satisfied with our current softball fields?	<input checked="" type="radio"/> yes	no
Do you feel we have a sufficient number of softball fields?	<input checked="" type="radio"/> yes	no
Are you satisfied with our current basketball facilities?		<input checked="" type="radio"/> no
Do you feel we have a sufficient number of basketball courts?	yes	<input checked="" type="radio"/> no
Are you satisfied with our current tennis facilities?	<input checked="" type="radio"/> yes	no
Do you feel we have a sufficient number of tennis courts?	<input checked="" type="radio"/> yes	no
Are you satisfied with our current trail facilities?	<input checked="" type="radio"/> yes	no
Do you feel we have a sufficient length of trails?	<input checked="" type="radio"/> yes	no
Do you feel playground equipment needs updates/improvement at neighborhood parks?	yes	<input checked="" type="radio"/> no
Do you feel playground equipment needs updates/improvements at the Gilmer City Park?	yes	<input checked="" type="radio"/> no
Do you feel our parks are in need of upgrades to allow for events such as tournaments?	yes	<input checked="" type="radio"/> no
Do you feel our existing parks should include water facilities such as spraygrounds?	<input checked="" type="radio"/> yes	no
Do you feel our parks and recreational facilities are well maintained?	yes	<input checked="" type="radio"/> no
Do you feel the city has a need for a position dedicated to park maintenance and upkeep?	<input checked="" type="radio"/> yes	no
Are you willing to support a tax increase to update our current facilities?	<input checked="" type="radio"/> yes	no
Are you willing to support a tax increase to fund additional parks?	<input checked="" type="radio"/> yes	no
Are you willing to support a tax increase to fund additional staff for park maintenance?	<input checked="" type="radio"/> yes	no
Would you volunteer at our parks and recreational facilities to provide labor for a project?	<input checked="" type="radio"/> yes	no
Would you volunteer at our parks and recreational facilities to perform maintenance?	<input checked="" type="radio"/> yes	no
Do you live in the city limits of Gilmer?	<input checked="" type="radio"/> yes	
Do you own property within the city limits of Gilmer?	yes	<input checked="" type="radio"/> no
What additional parks and recreational facilities would you like to have in Gilmer?		
Please rank the top five areas you would like to see improved by scoring 1-5 with 5 being what is most important. Only choose five areas of improvement.		
Frisbee Golf Course		
Playgrounds		
Picnic Shelters/Pavilions	2	
Multi-use Paved Trails	5	
Indoor Recreation Centers		
Nature Areas	3	
Sprayground		
Softball Fields		
Baseball Fields		
Soccer Fields		
Sand Volley Ball Court	4	
Basketball Courts		
Tennis Courts		

(Swimming Area at the Lake)

1

**City of Gilmer
Parks and Recreation Survey**

We appreciate your participation in this important survey. Please circle your answer to the right.		
Do you visit the Gilmer neighborhood city parks (Abney Street, Roosevelt, Quall Run)?	<input checked="" type="radio"/> yes	<input type="radio"/> no
Do you attend park activities at the Gilmer City Park (Athletic Complex)?	<input checked="" type="radio"/> yes	<input type="radio"/> no
Do you visit the Gilmer Lake Park or trail system?	<input type="radio"/> yes	<input checked="" type="radio"/> no
Are you involved in any volunteer work involving our city parks and recreational facilities?	<input type="radio"/> yes	<input checked="" type="radio"/> no
Are you or your family involved in activities or sporting events at our recreational facilities?	<input checked="" type="radio"/> yes	<input type="radio"/> no
Do you have children that participate in organized sporting events at our city parks?	<input checked="" type="radio"/> yes	<input type="radio"/> no
Do you feel our citizens are well informed about our parks and recreational facilities?	<input type="radio"/> yes	<input checked="" type="radio"/> no
Are you satisfied with the current conditions of our city parks?	<input type="radio"/> yes	<input checked="" type="radio"/> no
Do you feel safe when visiting our city parks?	<input checked="" type="radio"/> yes	<input type="radio"/> no
Do you feel we have adequate parking for our neighborhood parks?	<input checked="" type="radio"/> yes	<input checked="" type="radio"/> no
Do you feel we have adequate parking for our Gilmer City Park?	<input type="radio"/> yes	<input checked="" type="radio"/> no
Do you feel our Gilmer City Park has enough seating for spectators?	<input type="radio"/> yes	<input checked="" type="radio"/> no
Are you satisfied with current conditions of restroom facilities at the Gilmer City Park?	<input type="radio"/> yes	<input checked="" type="radio"/> no
Are you satisfied with current conditions of restroom facilities at our neighborhood parks?	<input type="radio"/> yes	<input checked="" type="radio"/> no
Are you satisfied with our current soccer fields?	<input type="radio"/> yes	<input checked="" type="radio"/> no
Do you feel we have a sufficient number of soccer fields?	<input type="radio"/> yes	<input checked="" type="radio"/> no
Are you satisfied with our current baseball fields?	<input type="radio"/> yes	<input checked="" type="radio"/> no
Do you feel we have a sufficient number of baseball fields?	<input type="radio"/> yes	<input checked="" type="radio"/> no
Are you satisfied with our current softball fields?	<input type="radio"/> yes	<input checked="" type="radio"/> no
Do you feel we have a sufficient number of softball fields?	<input type="radio"/> yes	<input checked="" type="radio"/> no
Are you satisfied with our current basketball facilities?	<input checked="" type="radio"/> yes	<input type="radio"/> no
Do you feel we have a sufficient number of basketball courts?	<input checked="" type="radio"/> yes	<input type="radio"/> no
Are you satisfied with our current tennis facilities?	<input type="radio"/> yes	<input type="radio"/> no
Do you feel we have a sufficient number of tennis courts?	<input type="radio"/> yes	<input type="radio"/> no
Are you satisfied with our current trail facilities?	<input type="radio"/> yes	<input type="radio"/> no
Do you feel we have a sufficient length of trails?	<input type="radio"/> yes	<input type="radio"/> no
Do you feel playground equipment needs updates/improvement at neighborhood parks?	<input checked="" type="radio"/> yes	<input type="radio"/> no
Do you feel playground equipment needs updates/improvements at the Gilmer City Park?	<input checked="" type="radio"/> yes	<input type="radio"/> no
Do you feel our parks are in need of upgrades to allow for events such as tournaments?	<input checked="" type="radio"/> yes	<input type="radio"/> no
Do you feel our existing parks should include water facilities such as spraygrounds?	<input checked="" type="radio"/> yes	<input type="radio"/> no
Do you feel our parks and recreational facilities are well maintained?	<input type="radio"/> yes	<input checked="" type="radio"/> no
Do you feel the city has a need for a position dedicated to park maintenance and upkeep?	<input checked="" type="radio"/> yes	<input type="radio"/> no
Are you willing to support a tax increase to update our current facilities?	<input type="radio"/> yes	<input type="radio"/> no
Are you willing to support a tax increase to fund additional parks?	<input type="radio"/> yes	<input type="radio"/> no
Are you willing to support a tax increase to fund additional staff for park maintenance?	<input type="radio"/> yes	<input type="radio"/> no
Would you volunteer at our parks and recreational facilities to provide labor for a project?	<input type="radio"/> yes	<input type="radio"/> no
Would you volunteer at our parks and recreational facilities to perform maintenance?	<input type="radio"/> yes	<input type="radio"/> no
Do you live in the city limits of Gilmer?	<input type="radio"/> yes	<input checked="" type="radio"/> no
Do you own property within the city limits of Gilmer?	<input type="radio"/> yes	<input checked="" type="radio"/> no
What additional parks and recreational facilities would you like to have in Gilmer? Please rank the top five areas you would like to see improved by scoring 1-5 with 5 being what is most important. Only choose five areas of improvement.		
Frisbee Golf Course		
Playgrounds		3
Picnic Shelters/Pavilions		
Multi-use Paved Trails		
Indoor Recreation Centers		
Nature Areas		
Sprayground		2
Softball Fields		
Baseball Fields		4
Soccer Fields		1
Sand Volley Ball Court		
Basketball Courts		5
Tennis Courts		

- ant mounds
 - # high grass
 Go visit some baseball parks like Springhill or Pittsburg, TX

The baseball fields have not been updated
 I played little league. I am now 42.

City of Gilmer Parks and Recreation Survey

We appreciate your participation in this important survey. Please circle your answer to the right.		
Do you visit the Gilmer neighborhood city parks (Abney Street, Roosevelt, Quail Run)?	<input checked="" type="radio"/> yes	<input type="radio"/> no
Do you attend park activities at the Gilmer City Park (Athletic Complex)?	<input checked="" type="radio"/> yes	<input type="radio"/> no
Do you visit the Gilmer Lake Park or trail system?	<input type="radio"/> yes	<input checked="" type="radio"/> no
Are you involved in any volunteer work involving our city parks and recreational facilities?	<input type="radio"/> yes	<input checked="" type="radio"/> no
Are you or your family involved in activities or sporting events at our recreational facilities?	<input checked="" type="radio"/> yes	<input type="radio"/> no
Do you have children that participate in organized sporting events at our city parks?	<input checked="" type="radio"/> yes	<input type="radio"/> no
Do you feel our citizens are well informed about our parks and recreational facilities?	<input type="radio"/> yes	<input checked="" type="radio"/> no
Are you satisfied with the current conditions of our city parks?	<input type="radio"/> yes	<input checked="" type="radio"/> no
Do you feel safe when visiting our city parks?	<input checked="" type="radio"/> yes	<input type="radio"/> no
Do you feel we have adequate parking for our neighborhood parks?	<input checked="" type="radio"/> yes	<input checked="" type="radio"/> no
Do you feel we have adequate parking for our Gilmer City Park?	<input type="radio"/> yes	<input checked="" type="radio"/> no
Do you feel our Gilmer City Park has enough seating for spectators?	<input type="radio"/> yes	<input checked="" type="radio"/> no
Are you satisfied with current conditions of restroom facilities at the Gilmer City Park?	<input type="radio"/> yes	<input checked="" type="radio"/> no
Are you satisfied with current conditions of restroom facilities at our neighborhood parks?	<input type="radio"/> yes	<input checked="" type="radio"/> no
Are you satisfied with our current soccer fields?	<input type="radio"/> yes	<input checked="" type="radio"/> no
Do you feel we have a sufficient number of soccer fields?	<input type="radio"/> yes	<input checked="" type="radio"/> no
Are you satisfied with our current baseball fields?	<input type="radio"/> yes	<input checked="" type="radio"/> no
Do you feel we have a sufficient number of baseball fields?	<input type="radio"/> yes	<input checked="" type="radio"/> no
Are you satisfied with our current softball fields?	<input type="radio"/> yes	<input checked="" type="radio"/> no
Do you feel we have a sufficient number of softball fields?	<input type="radio"/> yes	<input checked="" type="radio"/> no
Are you satisfied with our current basketball facilities?	<input checked="" type="radio"/> yes	<input type="radio"/> no
Do you feel we have a sufficient number of basketball courts?	<input checked="" type="radio"/> yes	<input type="radio"/> no
Are you satisfied with our current tennis facilities?	<input type="radio"/> yes	<input type="radio"/> no
Do you feel we have a sufficient number of tennis courts?	<input type="radio"/> yes	<input type="radio"/> no
Are you satisfied with our current trail facilities?	<input type="radio"/> yes	<input type="radio"/> no
Do you feel we have a sufficient length of trails?	<input type="radio"/> yes	<input type="radio"/> no
Do you feel playground equipment needs updates/improvement at neighborhood parks?	<input checked="" type="radio"/> yes	<input type="radio"/> no
Do you feel playground equipment needs updates/improvements at the Gilmer City Park?	<input checked="" type="radio"/> yes	<input type="radio"/> no
Do you feel our parks are in need of upgrades to allow for events such as tournaments?	<input checked="" type="radio"/> yes	<input type="radio"/> no
Do you feel our existing parks should include water facilities such as spraygrounds?	<input checked="" type="radio"/> yes	<input type="radio"/> no
Do you feel our parks and recreational facilities are well maintained?	<input type="radio"/> yes	<input checked="" type="radio"/> no
Do you feel the city has a need for a position dedicated to park maintenance and upkeep?	<input checked="" type="radio"/> yes	<input type="radio"/> no
Are you willing to support a tax increase to update our current facilities?	<input type="radio"/> yes	<input type="radio"/> no
Are you willing to support a tax increase to fund additional parks?	<input type="radio"/> yes	<input type="radio"/> no
Are you willing to support a tax increase to fund additional staff for park maintenance?	<input type="radio"/> yes	<input type="radio"/> no
Would you volunteer at our parks and recreational facilities to provide labor for a project?	<input type="radio"/> yes	<input type="radio"/> no
Would you volunteer at our parks and recreational facilities to perform maintenance?	<input type="radio"/> yes	<input type="radio"/> no
Do you live in the city limits of Gilmer?	<input type="radio"/> yes	<input checked="" type="radio"/> no
Do you own property within the city limits of Gilmer?	<input type="radio"/> yes	<input checked="" type="radio"/> no
What additional parks and recreational facilities would you like to have in Gilmer?		
Please rank the top five areas you would like to see improved by scoring 1-5 with 5 being what is most important. Only choose five areas of improvement.		
Frisbee Golf Course		
Playgrounds	3	
Picnic Shelters/Pavilions		
Multi-use Paved Trails		
Indoor Recreation Centers		
Nature Areas		
Sprayground	2	
Softball Fields		
Baseball Fields	4	
Soccer Fields		
Sand Volley Ball Court		
Basketball Courts	5	
Tennis Courts		

they are
→ terrible. It's
sad when a
coach has
to bring his
own
lawn mower
to use before
practice!

Lots of
ants on the
field
also!

Not enough parks

Thursday, January 18th, 5:30 p.m., Gilmer Civic Center

The public is encouraged to attend – Please bring this completed form to the meeting
City of Gilmer

Parks and Recreation Survey

We appreciate your participation in this important survey. Please circle your answer to the right.		
Do you visit the Gilmer neighborhood city parks (Abney Street, Roosevelt, Quail Run)?	<input checked="" type="radio"/> yes	<input type="radio"/> no
Do you attend park activities at the Gilmer City Park (Athletic Complex)?	<input checked="" type="radio"/> yes	<input type="radio"/> no
Do you visit the Gilmer Lake Park or trail system?	<input checked="" type="radio"/> yes	<input type="radio"/> no
Are you involved in any volunteer work involving our city parks and recreational facilities?	<input type="radio"/> yes	<input checked="" type="radio"/> no
Are you or your family involved in activities or sporting events at our recreational facilities?	<input checked="" type="radio"/> yes	<input type="radio"/> no
Do you have children that participate in organized sporting events at our city parks?	<input checked="" type="radio"/> yes	<input type="radio"/> no
Do you feel our citizens are well informed about our parks and recreational facilities?	<input type="radio"/> yes	<input checked="" type="radio"/> no
Are you satisfied with the current conditions of our city parks?	<input type="radio"/> yes	<input checked="" type="radio"/> no
Do you feel safe when visiting our city parks?	<input checked="" type="radio"/> yes	<input type="radio"/> no
Do you feel we have adequate parking for our neighborhood parks?	<input checked="" type="radio"/> yes	<input type="radio"/> no
Do you feel we have adequate parking for our Gilmer City Park?	<input checked="" type="radio"/> yes	<input type="radio"/> no
Do you feel our Gilmer City Park has enough seating for spectators?	<input checked="" type="radio"/> yes	<input type="radio"/> no
Are you satisfied with current conditions of restroom facilities at the Gilmer City Park?	<input type="radio"/> yes	<input checked="" type="radio"/> no
Are you satisfied with current conditions of restroom facilities at our neighborhood parks?	<input type="radio"/> yes	<input checked="" type="radio"/> no
Are you satisfied with our current soccer fields?	<input type="radio"/> yes	<input checked="" type="radio"/> no
Do you feel we have a sufficient number of soccer fields?	<i>Don't know</i> <input type="radio"/> yes	<input type="radio"/> no
Are you satisfied with our current baseball fields?	<input type="radio"/> yes	<input checked="" type="radio"/> no
Do you feel we have a sufficient number of baseball fields?	<input type="radio"/> yes	<input checked="" type="radio"/> no
Are you satisfied with our current softball fields?	<input type="radio"/> yes	<input checked="" type="radio"/> no
Do you feel we have a sufficient number of softball fields?	<input type="radio"/> yes	<input checked="" type="radio"/> no
Are you satisfied with our current basketball facilities?	<input type="radio"/> yes	<input checked="" type="radio"/> no
Do you feel we have a sufficient number of basketball courts?	<input type="radio"/> yes	<input checked="" type="radio"/> no
Are you satisfied with our current tennis facilities?	<input type="radio"/> yes	<input checked="" type="radio"/> no
Do you feel we have a sufficient number of tennis courts?	<input type="radio"/> yes	<input checked="" type="radio"/> no
Are you satisfied with our current trail facilities?	<input checked="" type="radio"/> yes	<input type="radio"/> no
Do you feel we have a sufficient length of trails?	<i>Need a short trail</i> <input type="radio"/> yes	<input checked="" type="radio"/> no
Do you feel playground equipment needs updates/improvement at neighborhood parks?	<input checked="" type="radio"/> yes	<input type="radio"/> no
Do you feel playground equipment needs updates/improvements at the Gilmer City Park?	<input checked="" type="radio"/> yes	<input type="radio"/> no
Do you feel our parks are in need of upgrades to allow for events such as tournaments?	<input checked="" type="radio"/> yes	<input type="radio"/> no
Do you feel our existing parks should include water facilities such as spraygrounds?	<input checked="" type="radio"/> yes	<input type="radio"/> no
Do you feel our parks and recreational facilities are well maintained?	<input checked="" type="radio"/> yes	<input type="radio"/> no
Do you feel the city has a need for a position dedicated to park maintenance and upkeep?	<input checked="" type="radio"/> yes	<input type="radio"/> no
Are you willing to support a tax increase to update our current facilities?	<input checked="" type="radio"/> yes	<input type="radio"/> no
Are you willing to support a tax increase to fund additional parks?	<input checked="" type="radio"/> yes	<input type="radio"/> no
Are you willing to support a tax increase to fund additional staff for park maintenance?	<input checked="" type="radio"/> yes	<input type="radio"/> no
Would you volunteer at our parks and recreational facilities to provide labor for a project?	<input checked="" type="radio"/> yes	<input type="radio"/> no
Would you volunteer at our parks and recreational facilities to perform maintenance?	<input checked="" type="radio"/> yes	<input type="radio"/> no
Do you live in the city limits of Gilmer?	<input checked="" type="radio"/> yes	<input type="radio"/> no
Do you own property within the city limits of Gilmer?	<input checked="" type="radio"/> yes	<input type="radio"/> no
What additional parks and recreational facilities would you like to have in Gilmer?		
Please rank the top five areas you would like to see improved by scoring 1-5 with 5 being what is most important. Only choose five areas of improvement.		
Frisbee Golf Course		
Playgrounds		
Picnic Shelters/Pavilions		
Multi-use Paved Trails		
Indoor Recreation Centers		
Nature Areas		
Sprayground	<i>3</i>	
Softball Fields	<i>5</i>	
Baseball Fields	<i>2</i>	
Soccer Fields	<i>2</i>	
Sand Volley Ball Court	<i>4</i>	
Basketball Courts		
Tennis Courts		

Park Advisory Board/Town Hall Meeting
Thursday, March 1st, 5:30PM, Gilmer Civic Center
 Please complete this survey and return to city hall by Feb. 18, 2018.

City of Gilmer
Parks and Recreation Survey

Please circle your answer to the right.

Do you visit the Gilmer neighborhood city parks (Abney Street, Roosevelt, Quail Run)?	yes	no
Do you attend park activities at the Gilmer City Park (Athletic Complex)?	yes	no
Do you visit the Gilmer Lake Park or trail system?	yes	no
Are you involved in any volunteer work involving our city parks and recreational facilities?	yes	no
Are you or your family involved in activities or sporting events at our recreational facilities?	yes	no
Do you have children that participate in organized sporting events at our city parks?	yes	no
Do you feel our citizens are well informed about our parks and recreational facilities?	yes	no
Are you satisfied with the current conditions of our city parks?	yes	no
Do you feel safe when visiting our city parks?	yes	no
Do you feel we have adequate parking for our neighborhood parks?	yes	no
Do you feel we have adequate parking for our Gilmer City Park?	yes	no
Do you feel our Gilmer City Park has enough seating for spectators?	yes	no
Are you satisfied with current conditions of restroom facilities at the Gilmer City Park?	yes	no
Are you satisfied with current conditions of restroom facilities at our neighborhood parks?	yes	no
Are you satisfied with our current soccer fields?	yes	no
Do you feel we have a sufficient number of soccer fields?	yes	no
Are you satisfied with our current baseball fields?	yes	no
Do you feel we have a sufficient number of baseball fields?	yes	no
Are you satisfied with our current softball fields?	yes	no
Do you feel we have a sufficient number of softball fields?	yes	no
Are you satisfied with our current basketball facilities?	yes	no
Do you feel we have a sufficient number of basketball courts?	yes	no
Are you satisfied with our current tennis facilities?	yes	no
Do you feel we have a sufficient number of tennis courts?	yes	no
Are you satisfied with our current trail facilities?	yes	no
Do you feel we have a sufficient length of trails?	yes	no
Do you feel playground equipment needs updates/improvement at neighborhood parks?	yes	no
Do you feel playground equipment needs updates/improvements at the Gilmer City Park?	yes	no
Do you feel our parks are in need of upgrades to allow for events such as tournaments?	yes	no
Do you feel our existing parks should include water facilities such as spraygrounds?	yes	no
Do you feel our parks and recreational facilities are well maintained?	yes	no
Do you feel the city has a need for a position dedicated to park maintenance and upkeep?	yes	no
Are you willing to support a tax increase to update our current facilities?	yes	no
Are you willing to support a tax increase to fund additional parks?	yes	no
Are you willing to support a tax increase to fund additional staff for park maintenance?	yes	no
Would you volunteer at our parks and recreational facilities to provide labor for a project?	yes	no
Would you volunteer at our parks and recreational facilities to perform maintenance?	yes	no
Do you live in the city limits of Gilmer?	yes	no
Do you own property within the city limits of Gilmer?	yes	no
What additional parks and recreational facilities would you like to have in Gilmer? Please rank the top five areas you would like to see improved by scoring 1-5 with 5 being what is most important. Only choose five areas of improvement.		
Frish: Golf Course		
Play: yards		
Picnic shelters/Pavilions	5	
Mult: Use Paved Trails	5	
Indoo: Recreation Centers	5	
Natur: Areas	3	
Spray: ound	3	
Softba: l Fields	3	
Baseba: l Fields		
Socce: l Fields		
Sand Volley Ball Court		
Basketball Courts		
Tennis Courts	0	

N/A never used them
N/A

City of Gilmer Parks and Recreation Survey

We appreciate your participation in this important survey. Please circle your answer to the right.		
Do you visit the Gilmer neighborhood city parks (Abney Street, Roosevelt, Quall Run)?	<input checked="" type="radio"/> yes	<input type="radio"/> no
Do you attend park activities at the Gilmer City Park (Athletic Complex)?	<input checked="" type="radio"/> yes	<input type="radio"/> no
Do you visit the Gilmer Lake Park or trail system?	<input checked="" type="radio"/> yes	<input type="radio"/> no
Are you involved in any volunteer work involving our city parks and recreational facilities?	<input type="radio"/> yes	<input checked="" type="radio"/> no
Are you or your family involved in activities or sporting events at our recreational facilities?	<input checked="" type="radio"/> yes	<input type="radio"/> no
Do you have children that participate in organize sporting events at our city parks?	<input checked="" type="radio"/> yes	<input type="radio"/> no
Do you feel our citizens are well informed about our parks and recreational facilities?	<input type="radio"/> yes	<input checked="" type="radio"/> no
Are you satisfied with the current conditions of our city parks?	<input type="radio"/> yes	<input checked="" type="radio"/> no
Do you feel safe when visiting our city parks?	<input checked="" type="radio"/> yes	<input type="radio"/> no
Do you feel we have adequate parking for our neighborhood parks?	<input type="radio"/> yes	<input checked="" type="radio"/> no
Do you feel we have adequate parking for our Gilmer City Park?	<input type="radio"/> yes	<input checked="" type="radio"/> no
Do you feel our Gilmer City Park has enough seating for spectators?	<input type="radio"/> yes	<input checked="" type="radio"/> no
Are you satisfied with current conditions of restroom facilities at the Gilmer City Park?	<input type="radio"/> yes	<input checked="" type="radio"/> no
Are you satisfied with current conditions of restroom facilities at our neighborhood parks?	<input type="radio"/> yes	<input type="radio"/> no
Are you satisfied with our current soccer fields?	<input checked="" type="radio"/> yes	<input type="radio"/> no
Do you feel we have a sufficient number of soccer fields?	<input checked="" type="radio"/> yes	<input type="radio"/> no
Are you satisfied with our current baseball fields?	<input type="radio"/> yes	<input checked="" type="radio"/> no
Do you feel we have a sufficient number of baseball fields?	<input checked="" type="radio"/> yes	<input type="radio"/> no
Are you satisfied with our current softball fields?	<input type="radio"/> yes	<input type="radio"/> no
Do you feel we have a sufficient number of softball fields?	<input type="radio"/> yes	<input type="radio"/> no
Are you satisfied with our current basketball facilities?	<input type="radio"/> yes	<input checked="" type="radio"/> no
Do you feel we have a sufficient number of basketball courts?	<input type="radio"/> yes	<input type="radio"/> no
Are you satisfied with our current tennis facilities?	<input type="radio"/> yes	<input checked="" type="radio"/> no
Do you feel we have a sufficient number of tennis courts?	<input type="radio"/> yes	<input checked="" type="radio"/> no
Are you satisfied with our current trail facilities?	<input type="radio"/> yes	<input type="radio"/> no
Do you feel we have a sufficient length of trails?	<input type="radio"/> yes	<input type="radio"/> no
Do you feel playground equipment needs updates/improvement at neighborhood parks?	<input type="radio"/> yes	<input type="radio"/> no
Do you feel playground equipment needs updates/improvements at the Gilmer City Park?	<input type="radio"/> yes	<input checked="" type="radio"/> no
Do you feel our parks are in need of upgrades to allow for events such as tournaments?	<input checked="" type="radio"/> yes	<input type="radio"/> no
Do you feel our existing parks should include water facilities such as spraygrounds?	<input checked="" type="radio"/> yes	<input type="radio"/> no
Do you feel our parks and recreational facilities are well maintained?	<input type="radio"/> yes	<input checked="" type="radio"/> no
Do you feel the city has a need for a position dedicated to park maintenance and upkeep?	<input checked="" type="radio"/> yes	<input type="radio"/> no
Are you willing to support a tax increase to update our current facilities?	<input checked="" type="radio"/> yes	<input type="radio"/> no
Are you willing to support a tax increase to fund additional parks?	<input checked="" type="radio"/> yes	<input type="radio"/> no
Are you willing to support a tax increase to fund additional staff for park maintenance?	<input checked="" type="radio"/> yes	<input type="radio"/> no
Would you volunteer at our parks and recreational facilities to provide labor for a project?	<input checked="" type="radio"/> yes	<input type="radio"/> no
Would you volunteer at our parks and recreational facilities to perform maintenance?	<input checked="" type="radio"/> yes	<input type="radio"/> no
Do you live in the city limits of Gilmer?	<input checked="" type="radio"/> yes	<input type="radio"/> no
Do you own property within the city limits of Gilmer?	<input checked="" type="radio"/> yes	<input type="radio"/> no
What additional parks and recreational facilities would you like to have in Gilmer?		
Please rank the top five areas you would like to see improved by scoring 1-5 with 5 being what is most important. Only choose five areas of improvement.		
Frisbee Golf Course		
Playgrounds	2	
Picnic Shelters/Pavillions	3	
Multi-use Paved Trails		
Indoor Recreation Centers		
Nature Areas		
Sprayground	5	
Softball Fields		
Baseball Fields	4	
Soccer Fields	1	
Sand Volley Ball Court		
Basketball Courts		
Tennis Courts		

I am embarred with our current baseball fields. People are getting injured!!! Ants holes, mounds... etc. makes our fields unusable!

City of Gilmer Parks and Recreation Survey

We appreciate your participation in this important survey. Please circle your answer to the right.		
Do you visit the Gilmer neighborhood city parks (Abney Street, Roosevelt, Quail Run)?	<input checked="" type="radio"/> yes	<input type="radio"/> no
Do you attend park activities at the Gilmer City Park (Athletic Complex)?	<input checked="" type="radio"/> yes	<input type="radio"/> no
Do you visit the Gilmer Lake Park or trail system?	<input checked="" type="radio"/> yes	<input type="radio"/> no
Are you involved in any volunteer work involving our city parks and recreational facilities?	<input checked="" type="radio"/> yes	<input type="radio"/> no
Are you or your family involved in activities or sporting events at our recreational facilities?	<input checked="" type="radio"/> yes	<input type="radio"/> no
Do you have children that participate in organized sporting events at our city parks?	<input checked="" type="radio"/> yes	<input type="radio"/> no
Do you feel our citizens are well informed about our parks and recreational facilities?	<input type="radio"/> yes	<input checked="" type="radio"/> no
Are you satisfied with the current conditions of our city parks?	<input type="radio"/> yes	<input checked="" type="radio"/> no
Do you feel safe when visiting our city parks?	<input checked="" type="radio"/> yes	<input type="radio"/> no
Do you feel we have adequate parking for our neighborhood parks?	<input checked="" type="radio"/> yes	<input type="radio"/> no
Do you feel we have adequate parking for our Gilmer City Park?	<input type="radio"/> yes	<input checked="" type="radio"/> no
Do you feel our Gilmer City Park has enough seating for spectators?	<input type="radio"/> yes	<input checked="" type="radio"/> no
Are you satisfied with current conditions of restroom facilities at the Gilmer City Park?	<input type="radio"/> yes	<input checked="" type="radio"/> no
Are you satisfied with current conditions of restroom facilities at our neighborhood parks?	<input type="radio"/> yes	<input checked="" type="radio"/> no
Are you satisfied with our current soccer fields?	<input type="radio"/> yes	<input checked="" type="radio"/> no
Do you feel we have a sufficient number of soccer fields?	<input checked="" type="radio"/> yes	<input type="radio"/> no
Are you satisfied with our current baseball fields?	<input type="radio"/> yes	<input checked="" type="radio"/> no
Do you feel we have a sufficient number of baseball fields?	<input type="radio"/> yes	<input checked="" type="radio"/> no
Are you satisfied with our current softball fields?	<input type="radio"/> yes	<input checked="" type="radio"/> no
Do you feel we have a sufficient number of softball fields?	<input type="radio"/> yes	<input checked="" type="radio"/> no
Are you satisfied with our current basketball facilities?	<input type="radio"/> yes	<input checked="" type="radio"/> no
Do you feel we have a sufficient number of basketball courts?	<input type="radio"/> yes	<input checked="" type="radio"/> no
Are you satisfied with our current tennis facilities?	<input type="radio"/> yes	<input checked="" type="radio"/> no
Do you feel we have a sufficient number of tennis courts?	<input type="radio"/> yes	<input checked="" type="radio"/> no
Are you satisfied with our current trail facilities?	<input type="radio"/> yes	<input checked="" type="radio"/> no
Do you feel we have a sufficient length of trails?	<input type="radio"/> yes	<input checked="" type="radio"/> no
Do you feel playground equipment needs updates/improvement at neighborhood parks?	<input checked="" type="radio"/> yes	<input type="radio"/> no
Do you feel playground equipment needs updates/improvements at the Gilmer City Park?	<input checked="" type="radio"/> yes	<input type="radio"/> no
Do you feel our parks are in need of upgrades to allow for events such as tournaments?	<input checked="" type="radio"/> yes	<input type="radio"/> no
Do you feel our existing parks should include water facilities such as spraygrounds?	<input checked="" type="radio"/> yes	<input type="radio"/> no
Do you feel our parks and recreational facilities are well maintained?	<input type="radio"/> yes	<input checked="" type="radio"/> no
Do you feel the city has a need for a position dedicated to park maintenance and upkeep?	<input checked="" type="radio"/> yes	<input type="radio"/> no
Are you willing to support a tax increase to update our current facilities?	<input checked="" type="radio"/> yes	<input type="radio"/> no
Are you willing to support a tax increase to fund additional parks?	<input checked="" type="radio"/> yes	<input type="radio"/> no
Are you willing to support a tax increase to fund additional staff for park maintenance?	<input checked="" type="radio"/> yes	<input type="radio"/> no
Would you volunteer at our parks and recreational facilities to provide labor for a project?	<input checked="" type="radio"/> yes	<input type="radio"/> no
Would you volunteer at our parks and recreational facilities to perform maintenance?	<input checked="" type="radio"/> yes	<input type="radio"/> no
Do you live in the city limits of Gilmer?	<input type="radio"/> yes	<input checked="" type="radio"/> no
Do you own property within the city limits of Gilmer?	<input checked="" type="radio"/> yes	<input type="radio"/> no
What additional parks and recreational facilities would you like to have in Gilmer?		
Please rank the top five areas you would like to see improved by scoring 1-5 with 5 being what is most important. Only choose five areas of improvement.		
Frisbee Golf Course	1	
Playgrounds	3	
Picnic Shelters/Pavilions	3	
Multi-use Paved Trails	1	
Indoor Recreation Centers	1	
Nature Areas	2	
Sprayground	3	
Softball Fields	5	
Baseball Fields	5	
Soccer Fields	3	
Sand Volley Ball Court	2	
Basketball Courts	5	
Tennis Courts	3	

*baseball/softball
+ basketball upgrade*

City of Gilmer Parks and Recreation Survey

We appreciate your participation in this important survey. Please circle your answer to the right.		
Do you visit the Gilmer neighborhood city parks (Abney Street, Roosevelt, Quail Run)?	yes	no
Do you attend park activities at the Gilmer City Park (Athletic Complex)?	yes	no
Do you visit the Gilmer Lake Park or trail system?	yes	no
Are you involved in any volunteer work involving our city parks and recreational facilities?	yes	no
Are you or your family involved in activities or sporting events at our recreational facilities?	yes	no
Do you have children that participate in organized sporting events at our city parks?	yes	no
Do you feel our citizens are well informed about our parks and recreational facilities?	yes	no
Are you satisfied with the current conditions of our city parks?	yes	no
Do you feel safe when visiting our city parks?	yes	no
Do you feel we have adequate parking for our neighborhood parks?	yes	no
Do you feel we have adequate parking for our Gilmer City Park?	yes	no
Do you feel our Gilmer City Park has enough seating for spectators?	yes	no
Are you satisfied with current conditions of restroom facilities at the Gilmer City Park?	yes	no
Are you satisfied with current conditions of restroom facilities at our neighborhood parks?	yes	no
Are you satisfied with our current soccer fields?	yes	no
Do you feel we have a sufficient number of soccer fields?	yes	no
Are you satisfied with our current baseball fields?	yes	no
Do you feel we have a sufficient number of baseball fields?	yes	no
Are you satisfied with our current softball fields?	yes	no
Do you feel we have a sufficient number of softball fields?	yes	no
Are you satisfied with our current basketball facilities?	yes	no
Do you feel we have a sufficient number of basketball courts?	yes	no
Are you satisfied with our current tennis facilities?	yes	no
Do you feel we have a sufficient number of tennis courts?	yes	no
Are you satisfied with our current trail facilities?	yes	no
Do you feel we have a sufficient length of trails?	yes	no
Do you feel playground equipment needs updates/improvement at neighborhood parks?	yes	no
Do you feel playground equipment needs updates/improvements at the Gilmer City Park?	yes	no
Do you feel our parks are in need of upgrades to allow for events such as tournaments?	yes	no
Do you feel our existing parks should include water facilities such as spraygrounds?	yes	no
Do you feel our parks and recreational facilities are well maintained?	yes	no
Do you feel the city has a need for a position dedicated to park maintenance and upkeep?	yes	no
Are you willing to support a tax increase to update our current facilities?	yes	no
Are you willing to support a tax increase to fund additional parks?	yes	no
Are you willing to support a tax increase to fund additional staff for park maintenance?	yes	no
Would you volunteer at our parks and recreational facilities to provide labor for a project?	yes	no
Would you volunteer at our parks and recreational facilities to perform maintenance?	yes	no
Do you live in the city limits of Gilmer?	yes	no
Do you own property within the city limits of Gilmer?	yes	no
What additional parks and recreational facilities would you like to have in Gilmer?		
Please rank the top five areas you would like to see improved by scoring 1-5 with 5 being what is most important. Only choose five areas of improvement.		
Frisbee Golf Course		
Playgrounds		
Picnic Shelters/Pavilions	5	
Multi-use Paved Trails	4	
Indoor Recreation Centers		
Nature Areas		
Sprayground		
Softball Fields	2	
Baseball Fields	1	
Soccer Fields		
Sand Volley Ball Court		
Basketball Courts	3	
Tennis Courts		

Because of parents

Thursday, January 18th, 5:30 p.m., Gilmer Civic Center

The public is encouraged to attend – Please bring this completed form to the meeting
City of Gilmer

Parks and Recreation Survey

We appreciate your participation in this important survey. Please circle your answer to the right.	
Do you visit the Gilmer neighborhood city parks (Abney Street, Roosevelt, Quail Run)?	yes <input type="radio"/> no <input checked="" type="radio"/>
Do you attend park activities at the Gilmer City Park (Athletic Complex)?	<input checked="" type="radio"/> yes <input type="radio"/> no
Do you visit the Gilmer Lake Park or trail system?	<input checked="" type="radio"/> yes <input type="radio"/> no
Are you involved in any volunteer work involving our city parks and recreational facilities?	yes <input type="radio"/> no <input checked="" type="radio"/>
Are you or your family involved in activities or sporting events at our recreational facilities?	yes <input type="radio"/> no <input checked="" type="radio"/>
Do you have children that participate in organized sporting events at our city parks?	yes <input type="radio"/> no <input checked="" type="radio"/>
Do you feel our citizens are well informed about our parks and recreational facilities?	yes <input type="radio"/> no <input checked="" type="radio"/>
Are you satisfied with the current conditions of our city parks?	yes <input type="radio"/> no <input checked="" type="radio"/>
Do you feel safe when visiting our city parks?	<input checked="" type="radio"/> yes <input type="radio"/> no
Do you feel we have adequate parking for our neighborhood parks?	yes <input type="radio"/> no <input checked="" type="radio"/>
Do you feel we have adequate parking for our Gilmer City Park?	yes <input type="radio"/> no <input checked="" type="radio"/>
Do you feel our Gilmer City Park has enough seating for spectators?	yes <input type="radio"/> no <input checked="" type="radio"/>
Are you satisfied with current conditions of restroom facilities at the Gilmer City Park?	yes <input type="radio"/> no <input checked="" type="radio"/>
Are you satisfied with current conditions of restroom facilities at our neighborhood parks?	yes <input type="radio"/> no <input checked="" type="radio"/>
Are you satisfied with our current soccer fields?	yes <input type="radio"/> no <input checked="" type="radio"/>
Do you feel we have a sufficient number of soccer fields?	yes <input type="radio"/> no <input checked="" type="radio"/>
Are you satisfied with our current baseball fields?	yes <input type="radio"/> no <input checked="" type="radio"/>
Do you feel we have a sufficient number of baseball fields?	yes <input type="radio"/> no <input checked="" type="radio"/>
Are you satisfied with our current softball fields?	yes <input type="radio"/> no <input checked="" type="radio"/>
Do you feel we have a sufficient number of softball fields?	yes <input type="radio"/> no <input checked="" type="radio"/>
Are you satisfied with our current basketball facilities?	yes <input type="radio"/> no <input checked="" type="radio"/>
Do you feel we have a sufficient number of basketball courts?	yes <input type="radio"/> no <input checked="" type="radio"/>
Are you satisfied with our current tennis facilities?	yes <input type="radio"/> no <input checked="" type="radio"/>
Do you feel we have a sufficient number of tennis courts?	yes <input type="radio"/> no <input checked="" type="radio"/>
Are you satisfied with our current trail facilities?	yes <input type="radio"/> no <input checked="" type="radio"/>
Do you feel we have a sufficient length of trails?	yes <input type="radio"/> no <input checked="" type="radio"/>
Do you feel playground equipment needs updates/improvement at neighborhood parks?	yes <input type="radio"/> no <input checked="" type="radio"/>
Do you feel playground equipment needs updates/improvements at the Gilmer City Park?	<input checked="" type="radio"/> yes <input type="radio"/> no
Do you feel our parks are in need of upgrades to allow for events such as tournaments?	<input checked="" type="radio"/> yes <input type="radio"/> no
Do you feel our existing parks should include water facilities such as spraygrounds?	yes <input type="radio"/> no <input checked="" type="radio"/>
Do you feel our parks and recreational facilities are well maintained?	yes <input type="radio"/> no <input checked="" type="radio"/>
Do you feel the city has a need for a position dedicated to park maintenance and upkeep?	<input checked="" type="radio"/> yes <input type="radio"/> no
Are you willing to support a tax increase to update our current facilities?	<input checked="" type="radio"/> yes <input type="radio"/> no
Are you willing to support a tax increase to fund additional parks?	yes <input type="radio"/> no <input checked="" type="radio"/>
Are you willing to support a tax increase to fund additional staff for park maintenance?	<input checked="" type="radio"/> yes <input type="radio"/> no
Would you volunteer at our parks and recreational facilities to provide labor for a project?	yes <input type="radio"/> no <input checked="" type="radio"/>
Would you volunteer at our parks and recreational facilities to perform maintenance?	yes <input type="radio"/> no <input checked="" type="radio"/>
Do you live in the city limits of Gilmer?	<input checked="" type="radio"/> yes <input type="radio"/> no
Do you own property within the city limits of Gilmer?	<input checked="" type="radio"/> yes <input type="radio"/> no
What additional parks and recreational facilities would you like to have in Gilmer? Please rank the top five areas you would like to see improved by scoring 1-5 with 5 being what is most important. Only choose five areas of improvement.	Volleyball
Frisbee Golf Course	
Playgrounds	
Picnic Shelters/Pavillions	
Multi-use Paved Trails	
Indoor Recreation Centers	
Nature Areas	
Sprayground	
Softball Fields	
Baseball Fields	
Soccer Fields	
Sand Volley Ball Court	✓ Yes - no place in
Basketball Courts	city for volleyball
Tennis Courts	players to practice

Thursday, January 18th, 5:30 p.m., Gilmer Civic Center

The public is encouraged to attend - Please bring this completed form to the meeting
City of Gilmer

Parks and Recreation Survey

We appreciate your participation in this important survey. Please circle your answer to the right.		
Do you visit the Gilmer neighborhood city parks (Abney Street, Roosevelt, Quail Run)?	<input checked="" type="radio"/> yes	<input type="radio"/> no
Do you attend park activities at the Gilmer City Park (Athletic Complex)?	<input checked="" type="radio"/> yes	<input type="radio"/> no
Do you visit the Gilmer Lake Park or trail system?	<input type="radio"/> yes	<input checked="" type="radio"/> no
Are you involved in any volunteer work involving our city parks and recreational facilities?	<input type="radio"/> yes	<input checked="" type="radio"/> no
Are you or your family involved in activities or sporting events at our recreational facilities?	<input checked="" type="radio"/> yes	<input type="radio"/> no
Do you have children that participate in organize sporting events at our city parks?	<input checked="" type="radio"/> yes	<input type="radio"/> no
Do you feel our citizens are well informed about our parks and recreational facilities?	<input checked="" type="radio"/> yes	<input type="radio"/> no
Are you satisfied with the current conditions of our city parks?	<input checked="" type="radio"/> yes	<input type="radio"/> no
Do you feel safe when visiting our city parks?	<input checked="" type="radio"/> yes	<input type="radio"/> no
Do you feel we have adequate parking for our neighborhood parks?	<input checked="" type="radio"/> yes	<input type="radio"/> no
Do you feel we have adequate parking for our Gilmer City Park?	<input checked="" type="radio"/> yes	<input type="radio"/> no
Do you feel our Gilmer City Park has enough seating for spectators?	<input checked="" type="radio"/> yes	<input type="radio"/> no
Are you satisfied with current conditions of restroom facilities at the Gilmer City Park?	<input type="radio"/> yes	<input checked="" type="radio"/> no
Are you satisfied with current conditions of restroom facilities at our neighborhood parks?	<input type="radio"/> yes	<input checked="" type="radio"/> no
Are you satisfied with our current soccer fields?	<input type="radio"/> yes	<input checked="" type="radio"/> no
Do you feel we have a sufficient number of soccer fields?	<input checked="" type="radio"/> yes	<input type="radio"/> no
Are you satisfied with our current baseball fields?	<input checked="" type="radio"/> yes	<input type="radio"/> no
Do you feel we have a sufficient number of baseball fields?	<input checked="" type="radio"/> yes	<input type="radio"/> no
Are you satisfied with our current softball fields?	<input checked="" type="radio"/> yes	<input type="radio"/> no
Do you feel we have a sufficient number of softball fields?	<input checked="" type="radio"/> yes	<input type="radio"/> no
Are you satisfied with our current basketball facilities?	<input type="radio"/> yes	<input type="radio"/> no
Do you feel we have a sufficient number of basketball courts?	<input type="radio"/> yes	<input type="radio"/> no
Are you satisfied with our current tennis facilities?	<input type="radio"/> yes	<input type="radio"/> no
Do you feel we have a sufficient number of tennis courts?	<input type="radio"/> yes	<input type="radio"/> no
Are you satisfied with our current trail facilities?	<input type="radio"/> yes	<input type="radio"/> no
Do you feel we have a sufficient length of trails?	<input type="radio"/> yes	<input type="radio"/> no
Do you feel playground equipment needs updates/improvement at neighborhood parks?	<input type="radio"/> yes	<input checked="" type="radio"/> no
Do you feel playground equipment needs updates/improvements at the Gilmer City Park?	<input type="radio"/> yes	<input checked="" type="radio"/> no
Do you feel our parks are in need of upgrades to allow for events such as tournaments?	<input type="radio"/> yes	<input type="radio"/> no
Do you feel our existing parks should include water facilities such as spraygrounds ?	<input type="radio"/> yes	<input type="radio"/> no
Do you feel our parks and recreational facilities are well maintained?	<input checked="" type="radio"/> yes	<input type="radio"/> no
Do you feel the city has a need for a position dedicated to park maintenance and upkeep?	<input type="radio"/> yes	<input type="radio"/> no
Are you willing to support a tax increase to update our current facilities?	<input type="radio"/> yes	<input type="radio"/> no
Are you willing to support a tax increase to fund additional parks?	<input type="radio"/> yes	<input type="radio"/> no
Are you willing to support a tax increase to fund additional staff for park maintenance?	<input type="radio"/> yes	<input type="radio"/> no
Would you volunteer at our parks and recreational facilities to provide labor for a project?	<input type="radio"/> yes	<input type="radio"/> no
Would you volunteer at our parks and recreational facilities to perform maintenance?	<input type="radio"/> yes	<input type="radio"/> no
Do you live in the city limits of Gilmer?	<input type="radio"/> yes	<input checked="" type="radio"/> no
Do you own property within the city limits of Gilmer?	<input type="radio"/> yes	<input checked="" type="radio"/> no
What additional parks and recreational facilities would you like to have in Gilmer?		
Please rank the top five areas you would like to see improved by scoring 1-5 with 5 being what is most important. Only choose five areas of improvement.		
Frisbee Golf Course		
Playgrounds		
Picnic Shelters/Pavillions		
Multi-use Paved Trails		
Indoor Recreation Centers		
Nature Areas		
Sprayground		
Softball Fields		
Baseball Fields		
Soccer Fields		
Sand Volley Ball Court		
Basketball Courts		
Tennis Courts		

How much ↑

Thursday, January 18th, 5:30 p.m., Gilmer Civic Center

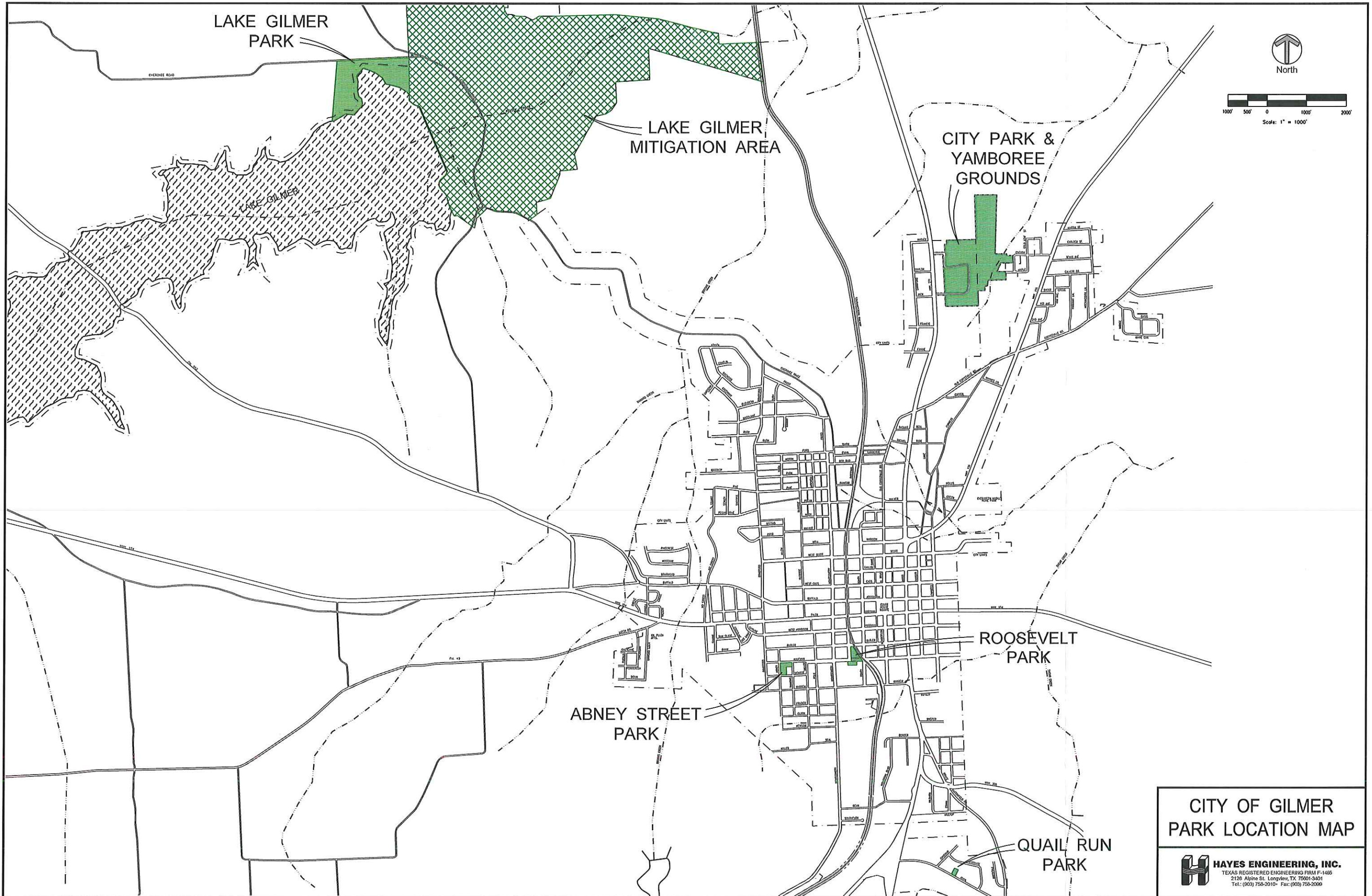
The public is encouraged to attend – Please bring this completed form to the meeting
City of Gilmer

Parks and Recreation Survey

We appreciate your participation in this important survey. Please circle your answer to the right.		
Do you visit the Gilmer neighborhood city parks (Abney Street, Roosevelt, Quail Run)?	yes	no
Do you attend park activities at the Gilmer City Park (Athletic Complex)?	yes	no
Do you visit the Gilmer Lake Park or trail system?	yes	no
Are you involved in any volunteer work involving our city parks and recreational facilities?	yes	no
Are you or your family involved in activities or sporting events at our recreational facilities?	yes	no
Do you have children that participate in organize sporting events at our city parks?	yes	no
Do you feel our citizens are well informed about our parks and recreational facilities?	yes	no
Are you satisfied with the current conditions of our city parks?	yes	no
Do you feel safe when visiting our city parks?	yes	no
Do you feel we have adequate parking for our neighborhood parks?	yes	no
Do you feel we have adequate parking for our Gilmer City Park?	yes	no
Do you feel our Gilmer City Park has enough seating for spectators?	yes	no
Are you satisfied with current conditions of restroom facilities at the Gilmer City Park?	yes	no
Are you satisfied with current conditions of restroom facilities at our neighborhood parks?	yes	no
Are you satisfied with our current soccer fields?	yes	no
Do you feel we have a sufficient number of soccer fields?	yes	no
Are you satisfied with our current baseball fields?	yes	no
Do you feel we have a sufficient number of baseball fields?	yes	no
Are you satisfied with our current softball fields?	yes	no
Do you feel we have a sufficient number of softball fields?	yes	no
Are you satisfied with our current basketball facilities?	yes	no
Do you feel we have a sufficient number of basketball courts?	yes	no
Are you satisfied with our current tennis facilities?	yes	no
Do you feel we have a sufficient number of tennis courts?	yes	no
Are you satisfied with our current trail facilities?	yes	no
Do you feel we have a sufficient length of trails?	yes	no
Do you feel playground equipment needs updates/improvement at neighborhood parks?	yes	no
Do you feel playground equipment needs updates/improvements at the Gilmer City Park?	yes	no
Do you feel our parks are in need of upgrades to allow for events such as tournaments?	yes	no
Do you feel our existing parks should include water facilities such as spraygrounds ?	yes	no
Do you feel our parks and recreational facilities are well maintained?	yes	no
Do you feel the city has a need for a position dedicated to park maintenance and upkeep?	yes	no
Are you willing to support a tax increase to update our current facilities?	yes	no
Are you willing to support a tax increase to fund additional parks?	yes	no
Are you willing to support a tax increase to fund additional staff for park maintenance?	yes	no
Would you volunteer at our parks and recreational facilities to provide labor for a project?	yes	no
Would you volunteer at our parks and recreational facilities to perform maintenance?	yes	no
Do you live in the city limits of Gilmer?	yes	no
Do you own property within the city limits of Gilmer?	yes	no
What additional parks and recreational facilities would you like to have in Gilmer?		
Please rank the top five areas you would like to see improved by scoring 1-5 with 5 being what is most important. Only choose five areas of improvement.		
Frisbee Golf Course		
Playgrounds		
Picnic Shelters/Pavillions		
Multi-use Paved Trails	5	
Indoor Recreation Centers	5	
Nature Areas	1	
Sprayground	5	
Softball Fields	5	
Baseball Fields	5	
Soccer Fields		
Sand Volley Ball Court		
Basketball Courts		
Tennis Courts	5	

Do not live in City

EXHIBIT B
Location Map



LAKE GILMER
PARK

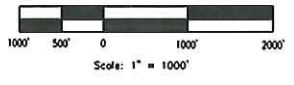
LAKE GILMER
MITIGATION AREA

CITY PARK &
YAMBOREE
GROUNDS

ABNEY STREET
PARK

ROOSEVELT
PARK

QUAIL RUN
PARK



CITY OF GILMER
PARK LOCATION MAP

H HAYES ENGINEERING, INC.
TEXAS REGISTERED ENGINEERING FIRM F-1465
2126 Alpine St. Longview, TX 75901-3401
Tel: (903) 758-2010 • Fax: (903) 758-2099

EXHIBIT C

Existing Park Pictures

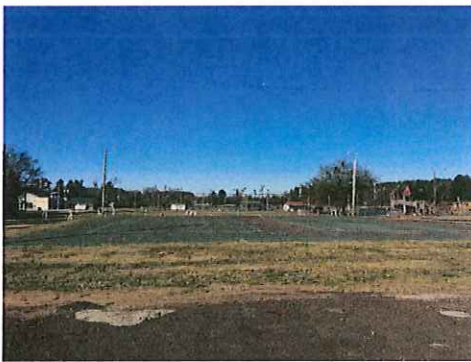
Gilmer City Park



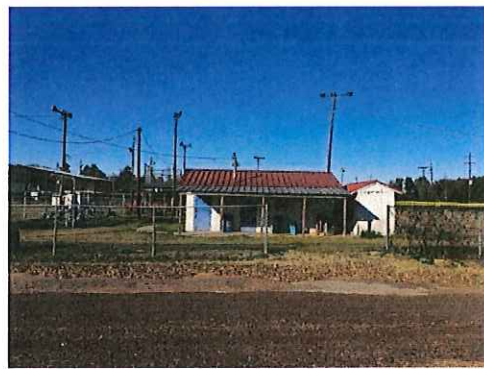
Baseball Field Bleachers and Backstop



Playground Equipment



Tennis Courts



Softball Restroom/Concession

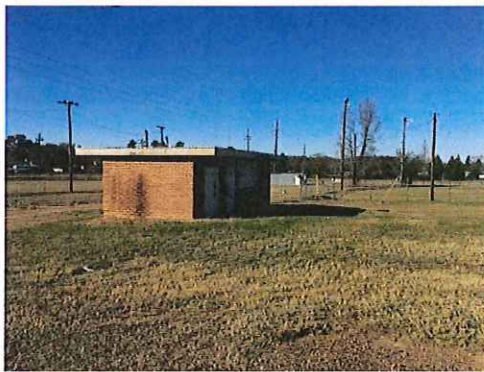
Gilmer City Park



Softball Fields



Batting Cages

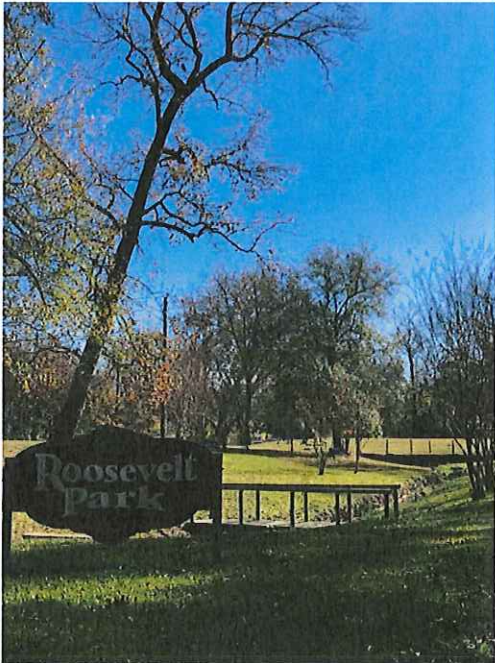


Concession

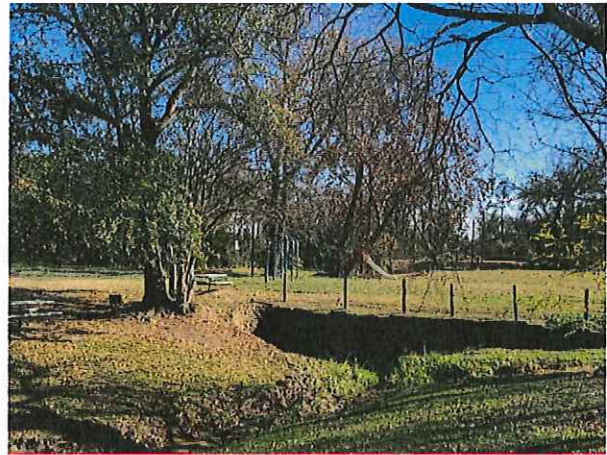


Pavilion and Parking

Roosevelt Park



Rock Lined Ditch

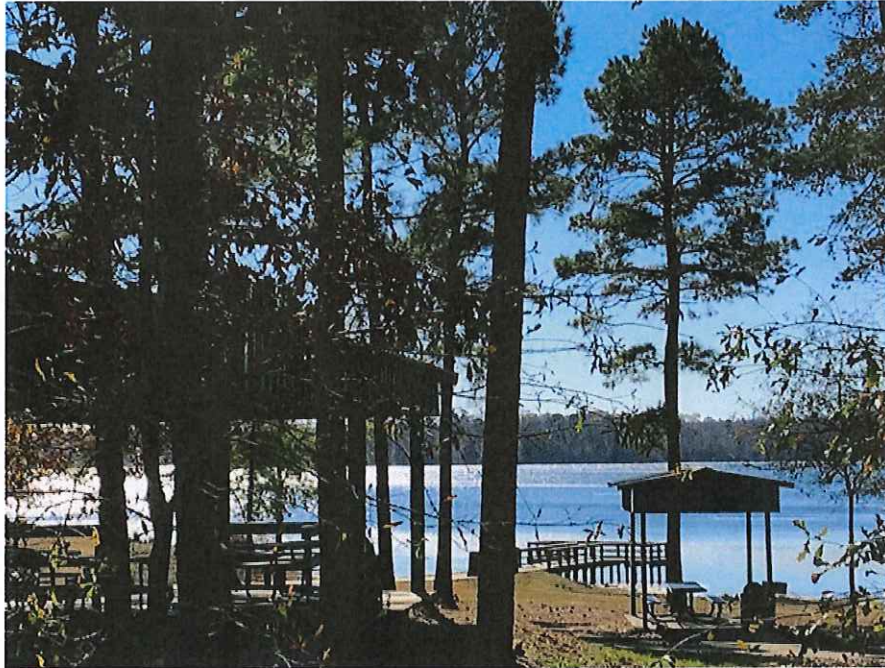


Picnic Area and Rock Wall

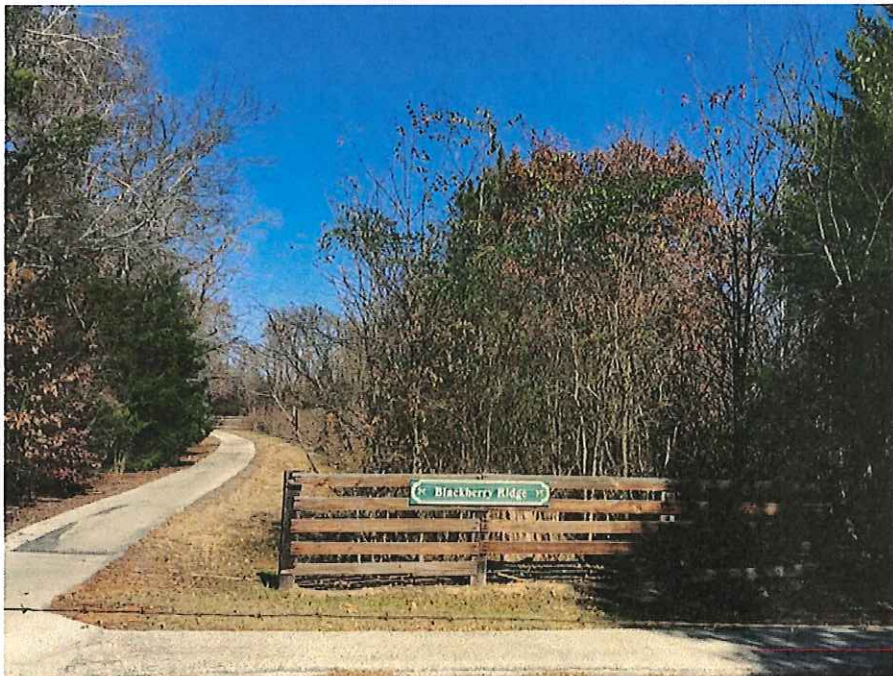
Quail Run Park



Lake Gilmer Park and Trail



Pavilions and Fishing Pier



Trail Head

Abney Street Park (Private)



Playground Area



Picnic Area

EXHIBIT D

- 1) TRPA Master Plan Guidelines
- 2) TRPA Grants Program

1) TRPA Master Plan Guidelines

LOCAL PARK GRANT PROGRAM

PARK, RECREATION AND OPEN SPACE MASTER PLAN GUIDELINES

The following guidelines have been developed to help local governments prepare park, recreation, and open space master plans in accordance with the Local Park Grant Programs Manual. Points may be received through the applicable "Project Priority Scoring System" for projects which meet priorities identified in Department-approved, locally-endorsed parks, recreation, and open space master plans.

**** Please note that a master plan is not required to participate in the grant program, nor does Texas Parks & Wildlife Department approval of a plan guarantee that points will be awarded for any project. ****

At a minimum, all master plans and/or updates must meet the requirements below for approval. For questions or assistance, please contact the Recreation Grants office at 512/389-8322.

Submit plans and/or updates to Recreation Grants for review as early as possible, but no later than sixty days before the application deadlines:

Local Park Grant Program	Master Plan Submission Date	Grant Application Submission Date
Outdoor	June 1 st	August 1 st
Outdoor	January 2 nd	March 1 st
Indoor	June 1 st	August 1 st
Urban Outdoor	January 2 nd	March 1 st
Urban Indoor	June 1 st	August 1 st

Because of the large number of review requests, early submission of master plans for review and approval is strongly encouraged.

It is also recommended that plans be reviewed by Recreation Grants prior to submission to the applicable governing body for final approval to preclude the sponsor from having to obtain additional approval from the governing body in the event the review finds changes to the plans are needed. Plans must be approved or submitted or postmarked in an approvable format (including resolution of adoption) by the deadlines to be eligible for project priority points.

Please provide the name and address of the contact person in the local government submitting the plan as well as the name and address of the preparer, if other than the sponsor.

The following documentation is required for approval by Recreation Grants:

PROOF OF ADOPTION

Once plans are complete, the applicable governing body (city council, county commissioner's court, district or authority board) must pass a formal resolution (or ordinance) adopting the plan and list of priority needs.

JURISDICTION-WIDE PLAN

Plans must be comprehensive and include the sponsor's entire area of jurisdiction, i.e., the entire city, county, or district, etc. Plans may be broken into planning areas, regions, districts or precincts, as needed for larger communities or counties. All planning areas, regions, districts, or precincts must be included in the plan as partial plans are unacceptable.

Plans must address the present and future needs of the community or area, not merely short-term needs. Plans that justify only one grant project will not be approved.

Regional (multi-jurisdictional) Park, Recreation and Open Space Master Plans may be submitted to the Department for review. This plan may be utilized by those communities located within the planning region. In order for any application to be eligible for priority planning points the project sponsor must adopt the regional plan by resolution. The plan must also include all of the required master plan elements for each community wishing to utilize the regional plan; **or** the project sponsor must submit a supplement, by the applicable master plan deadline, that includes any required information pertaining to their community that is not included in the regional plan. Please compare the regional plan's elements to the following plan content list to determine if supplemental information will be required by the Department.

PLAN DURATION

Plans must cover at least a ten year period. Plans must be **updated every five years to remain eligible**. At a minimum, updates should include a summary of:

- Accomplishments
- New public input
- Most recent inventory data
- Updated needs assessment
- Priorities
- New implementation plan
- Demographics
- Population projections
- Goals and objectives
- Standards, and
- Maps

Priorities should be updated as high priority items are accomplished and lower priorities move up. A new resolution is not required when updating priorities; however if you change or revise your priorities, submit a new resolution adopting the new priorities.

A completely new plan is required every ten years.

PLAN CONTENTS

All master plans must meet the following minimum requirements.

I. INTRODUCTION

This section should discuss the unit of government for which the plan is created. Include socio-economic data; demographics on ethnicity, age, and income; current and projected population figures and their source; growth or non-growth patterns; and the government's or agency's role in providing parks and recreation opportunities.

II. GOALS AND OBJECTIVES

Identify your parks and recreation service goals and follow with specific objectives for each goal. These should be given careful thought. State the time period of the plan.

III. PLAN DEVELOPMENT PROCESS

This section is very important so that we can understand how you identified and prioritized your needs. Include who wrote the plan and when the process began. Briefly but thoroughly discuss planning committees utilized and public input received through hearings, meetings, and surveys. You must also provide public input documentation. Acceptable documentation includes a copy of the public meeting notice, sign-in sheet, and the minutes for the public meeting certified by an official sponsor representative. If a public survey is completed, an explanation of how the survey was distributed along with a copy of the survey results will be required. Please contact us if you have any questions regarding acceptable public input documentation.

IV. AREA AND FACILITY CONCEPTS AND STANDARDS

This section of the plan is also very important and contributes directly to the assessment and identification of needs. You cannot properly identify needs without establishing local standards and concepts.

Area/Facility standards should be determined locally. Local standards are influenced by preferences and available economic and natural resources. A good source of information on this topic can be found in the National Recreation & Park Association's Park, Recreation, Open Space & Greenway Guidelines publication (formerly the Recreation, Park & Open Space Standards & Guidelines). All of the guidelines identified in this document may or may not apply to your community or county. Adjustments to those standards may be necessary to reflect your needs and resources. Contact the NRPA at <http://www.nrpa.org> or 703/858-2190 to obtain a copy of this publication.

V. INVENTORY OF AREAS AND FACILITIES

Assess what parks, recreation and open space areas and facilities are currently within your system. You should also include school and private recreational facilities that are open to the public. If inventory data are broken out by park, include a summary table for all parks and facilities. This inventory information is essential for assessing needs.

VI. NEEDS ASSESSMENT AND IDENTIFICATION

The following three approaches may be employed in determining parks and recreation needs: (1) demand-based, (2) standard-based, and (3) resource-based. Or a combination of these approaches may help you more accurately assess your needs.

The demand-based approach relies on information gathered from participation rates, surveys, and other information that indicates how much of the population wants certain types of facilities.

The standard-based approach uses established standards to determine facilities and park areas needed to meet the needs of a given population size. The standards may be based on demand studies, the professional judgment of park and recreation planners and designers, etc.

The resource-based approach examines the assets and resources of the area for open space, parks and recreation facilities, and defines how these resources can be utilized. For example – the availability of a lake or river within an area is a resource which can be utilized in developing a park system.

Sponsors with large jurisdiction areas may wish to divide their jurisdiction into planning areas, regions, districts or precincts. Specific needs can then be assessed and identified within each planning unit.

Clearly identify needs and explain the methodology for determining them. Consider both outdoor and indoor recreation needs, if applicable.

VII. PLAN IMPLEMENTATION AND PRIORITIZATION OF NEEDS

A priority list of needs should be ranked in order from highest to lowest priority and state when the needs will be met.

If your plan is broken into specific planning areas, regions, districts or precincts, you may prioritize needs within each of the planning regions.

Separate priority lists may be provided for indoor and outdoor needs. Lists must be area and/or facility specific, and be ranked according to priority order. It is the option of the sponsor to present the priority lists as park/site-based or recreational element-based. However, be aware that there are more points available in the current scoring system if priorities are compiled by recreational elements, and separated by indoor and outdoor.

Example of recreational facility-based priority lists:

Outdoor Priorities:

- #1 = Trails
- #2 = Picnic Tables
- #3 = Pavilions
- #4 = Adult softball fields
- #5 = Tennis courts, etc.

Indoor Priorities:

- #1 = Indoor pool
- #2 = Gym and basketball court
- #3 = Walking track
- #4 = Arts and crafts room
- #5 = Meeting room, etc.

Specific areas intended for open space acquisition and preservation should be located on a map, identified as a need, discussed, and prioritized in your plan.

Where appropriate, renovation/redevelopment needs must be discussed and may be ranked as a priority.

Renovation is defined as "to renew, make over..." Work on existing facilities to completely renew, update, or modernize such facilities so the finished product will meet present-day standards and be comparable with newly constructed similar facilities is classified as renovation.

Redevelopment means the removal of obsolete facilities and construction of new ones.

Repairs and/or maintenance may be listed as a priority, but are not eligible for grant assistance.

Identify resources for meeting your needs (e.g., city funds, in-house labor, bonds, grants, donations, etc.), and include a proposed timeline for accomplishing the plan's priorities.

CAUTION! Do not just focus on short-term needs and actions. Plan for the future also.

VIII. ILLUSTRATIONS, MAPS, SURVEYS, ETC.

Required: City or County map, or map of jurisdiction, as appropriate.

Include maps, surveys, charts, plates, graphics, and photographs in the plan which help explain and support your planning process and conclusions.

2) TRPA Grants Program



LOCAL PARK GRANT PROGRAM GENERAL INFORMATION

Overview:

The Local Park Grant Program consists of 5 individual programs that assist local units of government with the acquisition and/or development of public recreation areas and facilities throughout the State of Texas. The Program provides 50% matching grants on a reimbursement basis to eligible applicants. All grant assisted sites must be dedicated as parkland in perpetuity, properly maintained and open to the public.

Funding for these programs comes from a portion of the state sales tax on sporting goods through the Texas Recreation and Parks Account, the Texas Large County & Municipality Recreation & Parks Account, and from the federal Land and Water Conservation Fund.

Grant Program	Eligible Population (2010 Census)
Small Community	<20,000
Outdoor Recreation	<500,000
Indoor Recreation	<500,000
Urban Outdoor Recreation	>500,000
Urban Indoor Recreation	>500,000

Matching Funds:

Grant funds are provided on a matching basis with the local applicant providing 50% of the project costs. The match **MUST** be available at the time of application. The applicant's matching share may come from a number of sources including, but not limited to the following:

- Voter approved bonds
- Applicant cash and EDC funds
- Applicant in house labor, equipment, and materials
- Applicant publicly-owned non-parkland
- Fees or cash in-lieu of mandatory dedicated parkland
- Donated land, cash, labor, equipment, and materials.
- Other grants awarded

Applicant Eligibility:

Eligible applicants include political subdivisions of the State of Texas legally responsible for providing public recreation services to their citizens. This includes cities, counties, river authorities, municipal utility districts, and other special districts.

The following criteria will be used to determine applicant eligibility for additional funding:

- All previously completed Recreation Grant Projects must be in compliance with all the terms of the Project Agreement under which they received assistance and all program guidelines; and
- For active grants, all required project documentation (such as appraisals, construction plans, quarterly status reports, and reimbursement requests) must be complete and have been received on schedule, if

due; and

- For the Outdoor Recreation, Small Community and Indoor Recreation Grant Programs:
 - all active projects which are at least two years old must be reimbursed for a minimum of 50% of the approved grant amount; and
 - the total of approved grant funds which have not been reimbursed may not exceed \$2 million for all active grant projects.

- For the Urban Outdoor Recreation and Urban Indoor Recreation Grant Programs:
 - all active projects which are at least two years old must be reimbursed for a minimum of 25% of the approved grant amount; and
 - the total of approved grant funds which have not been reimbursed may not exceed \$4 million for all active grant projects.

A grantee may also be considered to be "high risk" based on financial stability or non-conforming management standards, requiring additional special conditions and restrictions as determined by grant management standards.

Project Eligibility:

Development projects may consist of basic outdoor recreation facilities and related support facilities to serve the general public; provided that the funding of the project is in the best public interest in accord with local plans. Facilities may be developed, renovated, or redeveloped on lands or waters owned or adequately controlled by the project applicant. Plans for recreational development should be based on public needs, expected use, and the type and character of the project areas.

Facilities should be attractive to the public and consistent with the natural setting and topographic limitations of the site. Recreational improvements should be designed to be harmonious with the natural environment. Emphasis should be given to public health, safety, the natural environment, barrier-free access, and the protection of recreational and community values of the area. These considerations should be part of the planning, design, and maintenance criteria for all grant-assisted areas.

Development projects may consist of the complete or partial development of a public recreation area. All projects must be logical units of work to be accomplished within three years.

Legal Control of Property:

Applicants requesting development funds are required to have full legal control of the property proposed for development. Adequate legal control of the property means that the applicant either has fee simple title to the property, is proposing to acquire the property as part of the project, or will lease the property from another government entity.

Leased property will only be eligible for fund support if it meets all of the following requirements:

1. Applicant has (or will have) full surface legal control of the property proposed for assistance; and
2. Applicant and lessor can guarantee that the project area will remain dedicated to public recreation use throughout the term of the lease. The lessor must be willing to comply with all program guidelines for the entire term of the lease; and
3. Project area must be leased to the applicant for a minimum of 25 years for most projects, and in some cases up to 40 years for major capital expenditures like aquatic and related facilities; and
4. The lease cannot be revocable at will by the lessor.

Barrier Free Access:

All recreational facilities acquired and/or developed with grant assistance must be designed in accordance with the Texas Architectural Barriers Act (Texas Civil Statutes – Article 9102) and must comply with the Americans with Disabilities Act (ADA) (Public Law 101-336). Texas Accessibility Standards can be found on the Texas Department of Licensing & Registration's website <http://www.license.state.tx.us/ab/ab.htm> .

Prevention of Surface Drilling and Mining:

The applicant must provide evidence that the surface of the project site is protected from any drilling or mining, or can demonstrate protection through the following:

- Existing ordinance or resolution
- Zoning
- Ownership of mineral rights by applicant
- Draft of ordinance, resolution or zoning, and statement that if funded, will authorize the ordinance or resolution.

Reservations and Rights Not Acquired:

Reservations and rights held by others (i.e. - mineral rights, property liens, easements, etc.) are permissible only if it is determined that the outdoor recreation activities and environment would not be adversely affected. The applicant shall list all outstanding rights or interests held by others on the boundary map. Reservations must also be discussed in the application to explain how these outstanding rights are to be dealt with to assure that recreation interests and the environment will not be adversely affected.

Public Hearing Requirements:

All grant applications must receive at least one public hearing prior to submission in compliance with the Texas Open Meetings Act <https://www.oag.state.tx.us/open/> . The hearing may be a separate public meeting, or it may occur at the time the governing body regularly meets. At this public hearing, the governing body must pass the resolution authorizing application submission. The public hearing must be properly posted and advertised in compliance with the Texas Open Meetings Act, and there must be an opportunity for public comment.

If the project is located in a floodplain/wetland area, the public must be notified that the project will have certain environmental impacts on that floodplain/wetland area, and must allow public comment. The following actions must be taken:

- The applicant must publish a notice in the local media describing the proposed action in the floodplain or wetland area and invite the public to provide their views on the proposal. This may be done by holding a public hearing or making the plans and other pertinent materials available for review at a public place (i.e., city hall, courthouse, library, etc.).
- The application must contain a copy of the published notice and any public comments received. If no public comments are received, this must be clearly stated.

Any public hearing or comments received within two years of the application submission will be accepted.

Development:

Development projects may be individual or multi-site projects and may include new construction, renovation and/or redevelopment. General repair and maintenance projects are not eligible. The following definitions are used to clarify the differences between these types of projects:

- **REPAIR AND MAINTENANCE:** Normally consist of minor work intended to mend a specific part of a facility which has become broken or otherwise inoperative, to return it to a useful state, or periodic minor work designed to merely maintain a specific part of a facility so such facility will be in a good state of maintenance and repair.
- **RENOVATION:** Renovate is defined in terms of “to renew or make over”. Work on existing facilities to completely renew, update, or modernize such facilities so the finished product will meet present-day standards and be comparable with newly constructed similar facilities is classified as renovation.
- **REDEVELOPMENT:** Redevelop is defined in terms of “to develop again.” Redevelopment of existing park areas includes demolition of obsolete facilities and the construction of new facilities.

Examples of Eligible Development

- Sports fields
- Boating, Fishing, and Hunting Facilities
- Picnic facilities
- Playgrounds
- Splash pads
- Swimming Pools
- Trails
- Camp Sites
- Recreational Support Facilities
- Community Gardens
- Basketball, Volleyball and other sports courts
- Small Amphitheaters
- Small Bandstands
- Rodeo Arenas
- Exhibit / Interpretive Displays
- Golf Courses
- Landscaping using native plants

Examples of Ineligible Development

- Professional or semi-professional arts and athletics
- Monuments & landmarks
- Amusement Parks
- Residences and furnishings
- Lodges, hotels, motels and luxury cabins
- Support facilities for ineligible facilities
- Marinas and related support facilities
- Non-native plants

Development on School Property

Although school districts are not eligible for grant assistance, facilities on public school grounds for joint school-general public use are allowed provided that the following conditions are met:

1. The property meets all requirements of the grant program, including requirements for development on leased property.
2. The proposed facilities are not required as part of the normal curriculum of the educational institution and must be primarily intended for general public use.
3. The lease agreement must include:
 - schedule of times the fund-assisted facilities are available to the public,
 - metes and bounds description of the project area, which includes the areas to be developed, and
 - ingress / egress route to the assisted facilities.

4. Adequate signage must be installed prior to the final grant payment/reimbursement that is:

- maintained throughout the term of the lease at the project site
- indicates when the fund-supported facilities are available to the public

Acquisition Projects:

Acquisition of lands, man-made improvements and waters, additions to existing parks, forests, wildlife areas, beaches, wetlands, and other similar areas dedicated to public outdoor recreation may be eligible for assistance.

Acquisitions which occur prior to grant approval, department authorization, or which do not meet the acquisition criteria, are not eligible for assistance.

The value of sponsor owned non-parkland may only be used as the sponsor's matching share if it has never been dedicated, platted, managed, used, or acquired for a public park or recreation use.

When proposing the acquisition of land or real property it is not appropriate to negotiate a price prior to grant and appraisal approval. You may contact the land owner to determine if the land is available for acquisition and you may determine if the owner is willing to donate, sell or partially donate the subject property.

Negotiation of an acquisition price prior to grant and appraisal approval may jeopardize the eligibility of the proposed acquisition for grant assistance. The level of grant assistance will be determined by an independent appraisal, approved by the Department. Projects approved for federal (LWCF) funding are required to complete appraisals in compliance with Uniform Appraisal Standards for Federal Land Acquisition ("yellow book" standards).

Delayed Development

Assistance may be available to acquire property on which recreational development is not planned until a future time. During the interim between the time the property is acquired and the time it is developed, the property should be open for those public recreational purposes which the land is capable of supporting, or which can be achieved with minimum public investment. Applicants submitting grant applications to acquire land for future development must submit a master plan for development with the application. Non-recreational uses, such as agriculture or grazing, which are occurring on the property at the time of acquisition, may continue for up to three years, or the remainder of the grant period, contingent on prior Department approval. In such cases the project applicant shall not receive reimbursement for the land until the non-recreational use is terminated.

If development will be delayed for more than two years from the date of acquisition, the following information must be included in the grant application:

1. Justification as to why the immediate acquisition is necessary;
2. A schedule for development, pursuant to the master plan;
3. Discussion of any non-recreational property uses, including when such uses will terminate. Non-recreational uses must terminate within three years from the date of acquisition;
4. Assurance that any income derived during the interim period will be used on the project site only;
5. Identification of the type of public recreational access to be provided during the interim period.

It is not necessary that the eventual development be carried out with grant assistance, or that such unassisted recreational development is Department approved as long as it is in accordance with the master plan and purpose for which the application was made. Once developed, all improvements on land acquired with fund assistance must be operated and maintained in accordance with program requirements. If acquisition assistance is received, development on the property must begin within three years of project approval. Public access to the site must be made available immediately after the site is acquired.

Waiver of Retroactivity

For land which may be under eminent threat of loss as an acquisition opportunity, the Department may authorize such acquisitions to occur prior to grant approval through a waiver of retroactivity. In addition, land may be transferred to a non-profit holding organization until an application has been reviewed and approved.

Ineligible Acquisitions

1. Historic sites and structures. Exceptions may be made with Department approval only when it is clearly demonstrated that the acquisition is primarily for public recreation purposes. This exclusion need not prevent the consideration of a project calling for the acquisition of real property interest contiguous to (or near) historic sites/structures which meet priority recreation needs. The acquisition must be in accordance with the Texas Antiquities Code if it is adjacent to or includes a site listed as a State Archaeological Landmark (SAL) or if it is a site eligible for listing as a SAL.
2. Museums, sites for museums or sites primarily for archaeological excavation.
3. Public school property. Acquisition will not be made for school property to help meet minimum acreage requirements, as established by state law or local regulations.
4. Areas and facilities to be primarily used for semi-professional or professional arts or athletics.
5. Areas/facilities to be used solely for game refuges or fish production.
6. Areas containing luxury lodges, motels, cabins or similar elaborate facilities.
7. Land primarily for agricultural purposes.
8. Areas for which the primary purpose of the acquisition is for non-recreational uses (such as an area to be impounded or excavated to serve as a future public water supply).
9. Lands already within the public domain which were previously dedicated, platted, managed, used, or acquired for public park, recreation and open space use are not eligible to serve as the applicant's matching project share.
10. Land which has been designated for acquisition as mitigation for other public domain activities may not be used for matching fund purposes and will not be eligible for acquisition assistance. Land acquired for mitigation of projects undertaken by the private sector are, however, eligible for acquisition under this program and may be used as matching funds if proposed as a donation in the grant application.

Means of Acquisition

Acquisition of lands / waters or interests therein may be accomplished through purchase, eminent domain or condemnation, dedication, transfer, donation, or a combination of these methods. When the acquisition is proposed by donation, the nature of any restriction on the use of the area or condition of donation will be examined to ensure that it is compatible with the purpose of the project. Full title must rest with the applicant with no outstanding liens on the property.

Acquisition of Structures

Acquisition projects may include structures and impoundments which are:

1. To be used for public recreation or related support facilities; or
2. A part of the recreation area to be acquired and are to be removed, demolished, or drained in the case of an impoundment.

Grant applications must identify all improvements and discuss the proposed use, disposition, or mitigation of these structures.

Acquisition of Lesser Interests

Proposed acquisitions of interests in lands/waters of less than fee simple title are acceptable where such lesser rights will ensure the desired public use. Proposals such as a permanent park or conservation easements will be evaluated on their merit and contribution to public recreation.

Application Review:

The process of reviewing grant applications requires about five months. A technical review by Recreation Grants staff will be followed by a review by agency resource staff. If environmental concerns are identified such as potential endangered species being located on the project site, additional environmental coordination and/or a survey may be required. Recreation Grants will also coordinate the review of your project with the Texas Historical Commission (THC).

When all of the information necessary to complete the application is received, the project is scored, put in priority order by score, and recommendations are presented to the Texas Parks & Wildlife Commission.

The TPW Commission makes all final decisions regarding awards of program funds. Each project applicant will be notified of the staff's recommendation shortly before the TPW Commission hearing. The public is welcome to attend and participate at the hearing.

Funded Projects:

Single Audit Requirement

It is the responsibility of the grantee to have a Single Audit done annually according to the Texas Single Audit Circular for state funded projects, and according to OMB Circular A-133 for federally funded projects. A copy of this audit must be furnished to the Department when completed.

Retention and Use

Property acquired or developed with grant assistance shall be retained and used for public recreation. Any property acquired or developed shall not be converted to other than public recreation uses without Department approval. Such approval will be given only with the substitution of other properties of at least equal fair market value and equivalent usefulness, quality, and location. Conversion Guidelines are available by contacting the Recreation Grants office.

Operation and Maintenance

Property acquired or developed with program assistance will be operated and maintained as follows:

1. The property will be maintained as attractive and inviting to the public.
2. Sanitation and sanitary facilities will be maintained in accordance with applicable health standards.
3. Properties will be kept reasonably safe for public use.
4. Buildings, roads, trails, and other improvements will be kept in reasonable repair throughout their estimated lifetime to prevent undue deterioration and to encourage public use. It is not necessary that assisted improvements be maintained in perpetuity. Once assisted improvements have exceeded their estimated lifetime, or they are no longer economically feasible to operate or maintain, they may be demolished as long as the area remains in use for public recreation and prior Departmental approval is received.

5. The facility will be kept open for public use at reasonable hours and times of the year.
6. Property which includes natural area, wetland, or open space dedication should be maintained to preserve the original characteristics of the area which were suitable for these designations. This might include restrictions on development, mowing, drainage, landscaping, intensity of use, or other considerations which could affect the habitat or species within these designated areas.

Availability to Users

Non-Discrimination: Property acquired or developed with program assistance shall be open to persons regardless of age, race, color, religion, sex, national origin, or handicap. Discrimination on the basis of residence, including preferential reservation or membership systems, is prohibited, except to the extent that reasonable differences may be charged on the basis of residence.

Reasonable Use Limitations: Participants may impose reasonable limits on the type and extent of use of the areas and facilities acquired or developed with program assistance when such a limitation is necessary for maintenance or preservation.

Additional on-going commitments

All property acquired and/or developed with fund assistance must remain dedicated in perpetuity and be used only for public recreation, with the exception of leased lands which may revert to other uses upon lease expiration;

1. No overhead utility lines may be installed;
2. The project area(s) must be open to the public and utilized for public recreation, free from discrimination pursuant to Title VI of the Civil Rights Act of 1964;
3. The project area(s) must be maintained so that it is safe, attractive, and inviting to the public;
4. A permanent program acknowledgement sign or plaque must be installed and maintained at all project sites;
5. Periodic post completion inspections by Department staff will generally be unannounced, and are intended to ensure that program compliance continues after the project is completed. The applicant may be asked periodically to participate in post completion self-inspection. Applicants who fail to comply with long-term program commitments may jeopardize future eligibility for funds for new projects and/or be subject to legal actions by the state and/or federal government to enforce program compliance.

© TPWD PWD LF P4000-1445 (9/13)

TPWD receives federal assistance from the U.S. Fish and Wildlife Service and other federal agencies and is subject to Title VI of the Civil Rights Act of 1964, Section 504 of the Rehabilitation Act of 1973, Title II of the Americans with Disabilities Act of 1990, the Age Discrimination Act of 1975, Title IX of the Education Amendments of 1972, and state anti-discrimination laws which prohibit discrimination on the basis of race, color, national origin, age, sex or disability. If you believe that you have been discriminated against in any TPWD program, activity or facility, or need more information, please contact Civil Rights Coordinator for Public Access, U.S. Fish and Wildlife Service, 4401 N. Fairfax Drive, Mail Stop: MBSP-4020, Arlington, VA 22203.

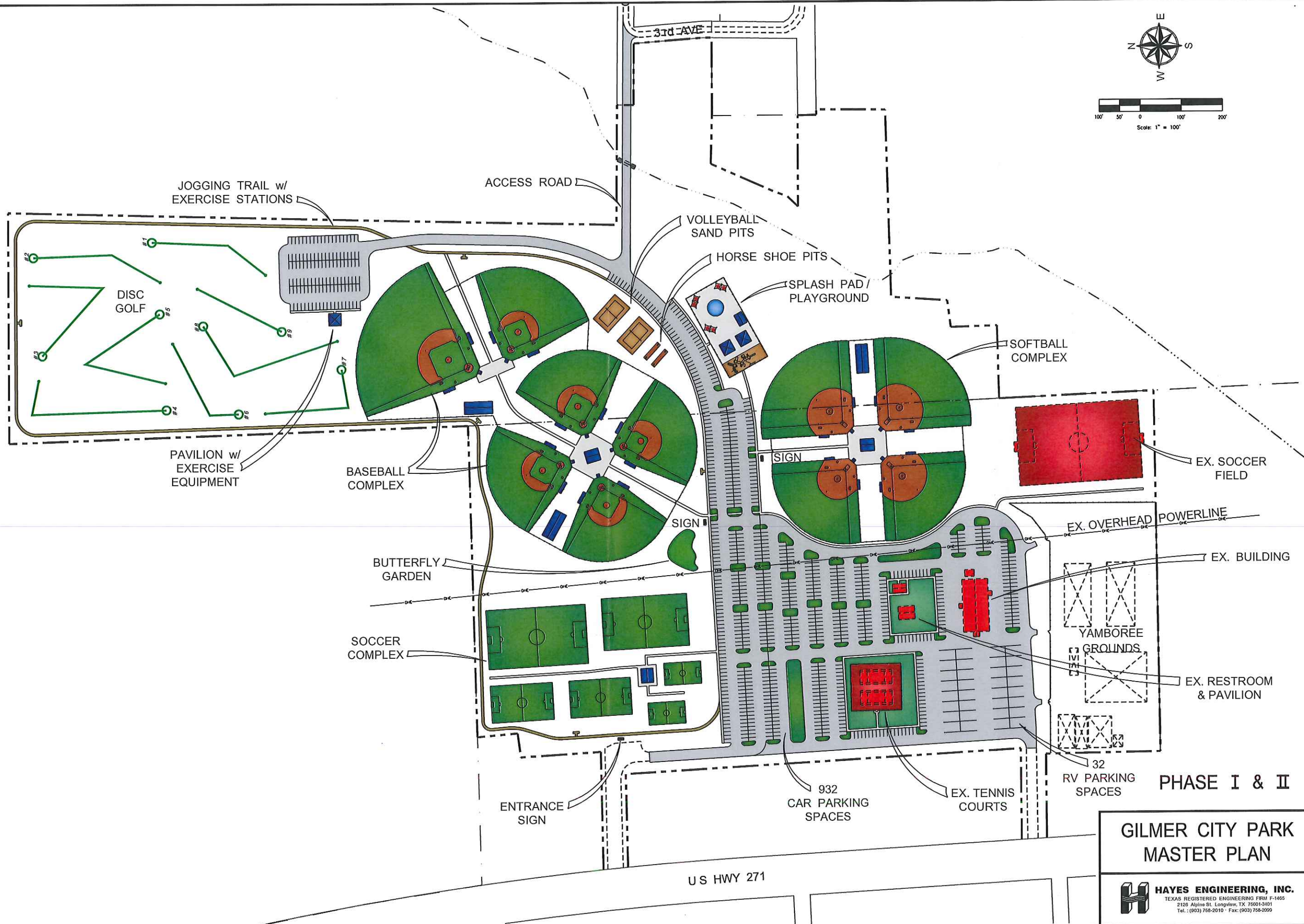
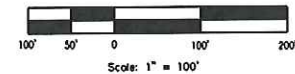
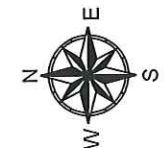
EXHIBIT E

Proposed Park Improvement Site Plans

Gilmer Park

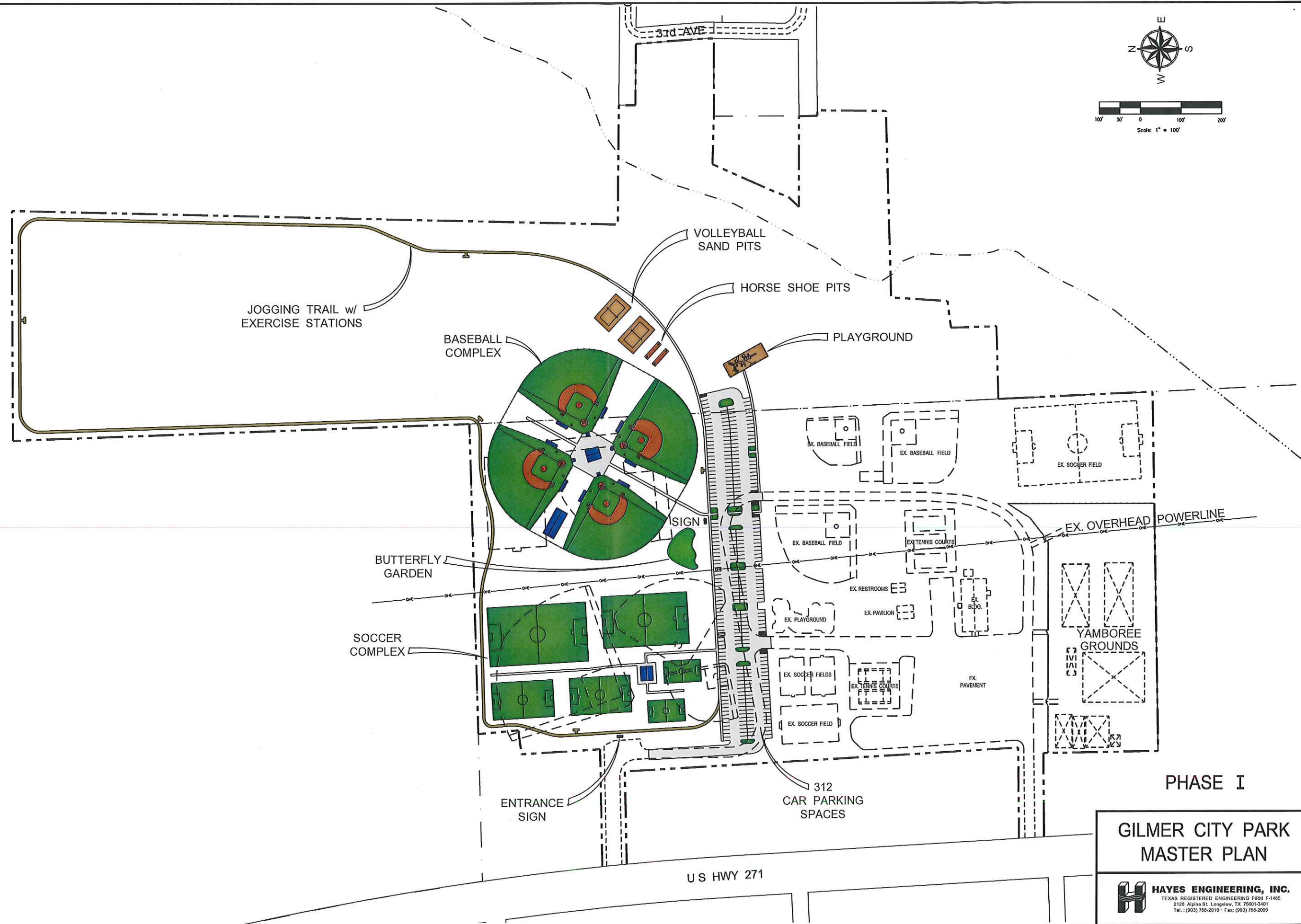
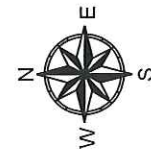
Roosevelt Park

Abney Street Park



PHASE I & II
GILMER CITY PARK
MASTER PLAN

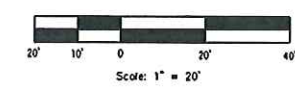
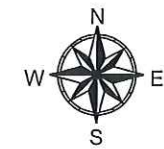
HAYES ENGINEERING, INC.
TEXAS REGISTERED ENGINEERING FIRM F-1465
2120 Alpine St., Longview, TX 75601-3101
Tel.: (903) 768-2010 - Fax: (903) 768-2099



PHASE I

GILMER CITY PARK MASTER PLAN

HAYES ENGINEERING, INC.
TEXAS REGISTERED ENGINEERING FIRM F-1465
2126 Alpine St., Longview, TX 75601-0451
Tel.: (903) 758-2010 - Fax: (903) 758-2009



KAUFMAN ST.

EX. 1" W.M.

TIMMONS ST.

ABNEY ST.

10
PARKING
SPACES

EX. PLAYGROUND

WALKING TRAIL

EX. 6" S.S.

MH

MH

EX. 2" W.M.

EX. 6" S.S.

HORSE SHOE
PITS

PLAYGROUND

BASKETBALL
COURT

PAVILION

EX. BASKETBALL
COURT

EX. 6" S.S.

RESTROOM

MONROE ST.

MH

IMPROVE
EXISTING PARKING LOT

EX. 2" W.M.

GILMER CITY PARK
MASTER PLAN
ABNEY PARK

 **HAYES ENGINEERING, INC.**
TEXAS REGISTERED ENGINEERING FIRM F-1495
2128 Alpine St. Longview, TX 75601-3401
Tel.: (903) 758-2010 • Fax: (903) 758-2099